

INDUSTRIAL HYDRAULICS BVA

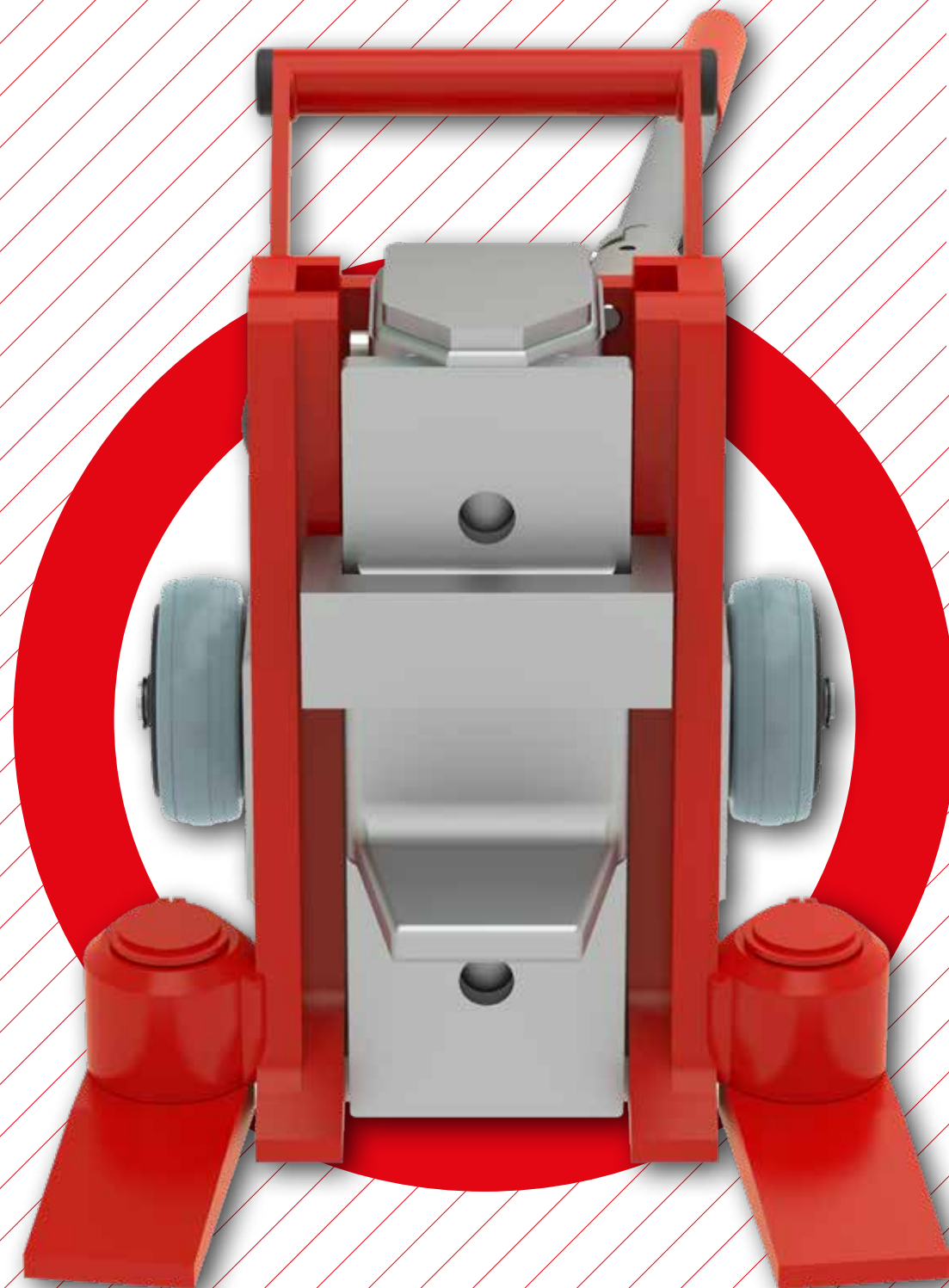


JUNG
JUNG-HEBETECHNIK.DE

JUNG on the move.

SOME STATIONS.

In several stages, JUNG was expanded from a one-man operation to an international company. In the meantime JUNG has more than 50 employees. Many of them have been with the company for a long time, in some cases even completed their training at JUNG. Our employees have the goal of working together to achieve the best for our customers. Our ambition for 50 years is to make lifting and moving heavy loads easier, safer and more ergonomic for the user. According to our slogan: JUNG = Innovation, Karl-Heinz Jung and Thomas Würthele, together with the JUNG employees, have developed a large number of different devices to be able to offer the right product for every application.



1972

FOUNDING

Karl-Heinz Jung founds the company JUNG in Kernen near Stuttgart.



1982

FIRST COMPANY BUILDING

The first own company building is built at the current location in Waiblingen.



1993

OWN SALES

JUNG separates from the former exclusive distribution partner and builds up its own sales department.



2001

NEW BUILDING

JUNG doubles the production area by building a new hall at the Waiblingen site.



2002

TUGGER TRAIN

JUNG expands its product range and now also produces trailers for in-house logistics.



2003

FOOT MASTER®

JUNG starts selling FOOT MASTER® leveling castors.



2008

INDUSTRIAL HYDRAULICS

JUNG is again expanding its product range to include industrial hydraulics.



2009

EXPANSION

JUNG further expands the production area by another hall at the Waiblingen site



2014

NEW PRODUCT LINE

JUNG presents the first electric-powered trolley JLA-e 15/30 G.

2022

50 YEARS

The JUNG company celebrates its 50th anniversary.

2020



SUPPORT TECHNOLOGY

Expansion of the product range with support technology and surface protection

2017



GORR TRANSPORTECHNIK

JUNG acquires the company Gorr Transporttechnik GmbH in Eschwege.

2017



LIFTING BAGS

JUNG starts the distribution of lifting bags.



RESPONSIBILITY AWARENESS.

QUALITY

You can always trust in the quality and durability of our products. To manufacture highest quality we use most modern machines and assure a continuously high standard by a certified quality management system.

State of the art CNC technology, advanced welding robots and a certified quality management system (DIN EN ISO 9001) assure a consistently high level of product quality. Each hydraulic jack is subjected to a pre-shipment function test and receives a test badge displaying the next recommended maintenance check date. Each self-powered trolley is also subjected to a pre-shipment function test.

Following products are ANSI/ASME (USA) tested: JH G-plus, JH G-plus EX, JHS, JKB, series K, series M.

PROCESSES & ENVIRONMENT

As an ISO 9001 certified company we continuously improve our processes by involving our customers, employees and suppliers.

CUSTOMER

The satisfaction of our customers is in the center of our efforts. Due to our creativity and our expertise, we realize individual customer requests.

STAFF

The company's success is depending on our staff members. Therefore, we are continuously investing in training and development and support the experience and competence through long-term employment.

SOCIAL COMMITMENT

We are a part of Waiblingen and are glad to support regional social and charitable organizations.

ENVIRONMENT

We meet our ecological responsibilities in our daily work flow. We utilize our own solar power, obtain power from regenerative energy sources and have examined our ecological accountability under the Ecofit project.



SINGLE ACTING CYLINDERS

Load capacity up to 10 metric tons

Advantages in detail:

➤ Long lasting and sturdy. Made of high quality solid materials:

- Cylinders are burnish rolled creating a smoother finish

- Polyurethane cup seals provide optimum performance

- Industrial hard chrome plated plunger prevents scratching and corrosion

- High strength steel construction

- High flow NPFT couplers

- Sealing ring to avoid contamination inside

➤ Additional advantages for flexible operation:

- Return spring provides quicker retraction

- Heavy duty, heat treated, grooved saddle provides better surface traction during operation

- Collar threads and base mounting holes for fixturing



TYPE		JH 0501	JH 0503	JH 0505	JH 0507	JH 0509
Load capacity	kg	4 500	4 500	4 500	4 500	4 500
Stroke	mm	27	78	123	181	232
Saddle	cm ²	6,5	6,5	6,5	6,5	6,5
Cylinder volume	ltr.	0,02	0,05	0,08	0,12	0,15
Height	A mm	116	169	220	271	322
Max. stroke	B mm	143	247	350	452	554
External Diameter	D mm	38	38	38	38	38
Piston	E mm	25	25	25	25	25
Depth of screw thread	K mm	16	16	16	16	16
Fitting of screw thread		3/8" - 18 NPTF	3/8" - 18 NPTF	3/8" - 18 NPTF	3/8" - 18 NPTF	3/8" - 18 NPTF
Weight	kg	1,4	1,6	2	2,2	2,6
ORDER-NO.		32 005 027-EZ	32 005 078-EZ	32 005 123-EZ	32 005 181-EZ	32 005 232-EZ



TYPE		JH 1001	JH 1002	JH 1004	JH 1006
Load capacity	kg	10 000	10 000	10 000	10 000
Stroke	mm	25	51	102	155
Saddle	cm ²	14,5	14,5	14,5	14,5
Cylinder volume	ltr.	0,04	0,07	0,15	0,22
Height	A mm	92	123	174	248
Max. stroke	B mm	117	174	276	403
External Diameter	D mm	57	57	57	57
Piston	E mm	38	38	38	38
Depth of screw thread	K mm	6	20	20	20
Fitting of screw thread		3/8" - 18 NPTF	3/8" - 18 NPTF	3/8" - 18 NPTF	3/8" - 18 NPTF
Weight	kg	2,2	3	3,7	4,3
ORDER-NO.		32 010 025-EZ	32 010 051-EZ	32 010 102-EZ	32 010 155-EZ

TYPE		JH 1008	JH 1010	JH 1012	JH 1014
Load capacity	kg	10 000	10 000	10 000	10 000
Stroke	mm	206	253	305	356
Saddle	cm ²	14,5	14,5	14,5	14,5
Cylinder volume	ltr.	0,29	0,37	0,44	0,52
Height	A mm	299	350	401	450
Max. stroke	B mm	505	607	706	806
External Diameter	D mm	57	57	57	57
Piston	E mm	38	38	38	38
Depth of screw thread	K mm	20	20	20	20
Fitting of screw thread		3/8" - 18 NPTF	3/8" - 18 NPTF	3/8" - 18 NPTF	3/8" - 18 NPTF
Weight	kg	5,4	6,4	6,8	8,2
ORDER-NO.		32 010 206-EZ	32 010 257-EZ	32 010 305-EZ	32 010 356-EZ

SINGLE ACTING CYLINDERS

Load capacity up to 23,6 metric tons



JH 1501 JH 1504 JH 1508 JH 1512



JH 2501 JH 2504 JH 2508 JH 2514

For information on matching
ACCESSORIES
see Pages
34-38.

TYPE		JH 1501	JH 1502	JH 1504	JH 1506
Load capacity	kg	14 400	14 400	14 400	14 400
Stroke	mm	25	51	102	155
Saddle	cm ²	20,3	20,3	20,3	20,3
Cylinder volume	ltr.	0,05	0,1	0,21	0,3
Height	A mm	124	149	200	270
Max. stroke	B mm	149	200	301	422
External Diameter	D mm	70	70	70	70
Piston	E mm	41	41	41	41
Depth of screw thread	K mm	25	25	25	25
Fitting of screw thread		3/8" - 18 NPTF	3/8" - 18 NPTF	3/8" - 18 NPTF	3/8" - 18 NPTF
Weight	kg	3,3	4,1	5,1	7

ORDER-NO. ■ 32 015 025-EZ ■ 32 015 051-EZ ■ 32 015 102-EZ ■ 32 015 155-EZ

TYPE		JH 1508	JH 1510	JH 1512	JH 1514
Load capacity	kg	14 400	14 400	14 400	14 400
Stroke	mm	206	257	303	356
Saddle	cm ²	20,3	20,3	20,3	20,3
Cylinder volume	ltr.	0,41	0,51	0,62	0,72
Height	A mm	321	372	423	474
Max. stroke	B mm	524	626	728	830
External Diameter	D mm	70	70	70	70
Piston	E mm	41	41	41	41
Depth of screw thread	K mm	25	25	25	25
Fitting of screw thread		3/8" - 18 NPTF	3/8" - 18 NPTF	3/8" - 18 NPTF	3/8" - 18 NPTF
Weight	kg	8	9,3	11,8	12,8

ORDER-NO. ■ 32 015 206-EZ ■ 32 015 257-EZ ■ 32 015 305-EZ ■ 32 015 356-EZ

TYPE		JH 2501	JH 2502	JH 2504	JH 2506
Load capacity	kg	23 600	23 600	23 600	23 600
Stroke	mm	26	51	102	155
Saddle	cm ²	33,2	33,2	33,2	33,2
Cylinder volume	ltr.	0,9	0,17	0,33	0,5
Height	A mm	143	168	219	272
Max. stroke	B mm	169	219	321	427
External Diameter	D mm	85	85	85	85
Piston	E mm	57	57	57	57
Depth of screw thread	K mm	30	30	30	30
Fitting of screw thread		3/8" - 18 NPTF	3/8" - 18 NPTF	3/8" - 18 NPTF	3/8" - 18 NPTF
Weight	kg	6,1	6,6	8,7	10,5

ORDER-NO. ■ 32 025 026-EZ ■ 32 025 051-EZ ■ 32 025 102-EZ ■ 32 025 155-EZ

TYPE		JH 2508	JH 2510	JH 2512	JH 2514
Load capacity	kg	23 600	23 600	23 600	23 600
Stroke	mm	206	257	310	362
Saddle	cm ²	33,2	33,2	33,2	33,2
Cylinder volume	ltr.	0,68	0,85	1,03	1,2
Height	A mm	323	34	426	476
Max. stroke	B mm	529	631	736	838
External Diameter	D mm	85	85	85	85
Piston	E mm	57	57	57	57
Depth of screw thread	K mm	30	30	30	30
Fitting of screw thread		3/8" - 18 NPTF	3/8" - 18 NPTF	3/8" - 18 NPTF	3/8" - 18 NPTF
Weight	kg	12,3	14,0	16,3	17,7

ORDER-NO. ■ 32 025 206-EZ ■ 32 025 257-EZ ■ 32 025 310-EZ ■ 32 025 362-EZ

SINGLE ACTING CYLINDERS

Load capacity up to 94,5 metric tons

Advantages in detail:

➤ Long lasting and sturdy. Made of high quality solid materials:

- Cylinders are burnish rolled creating a smoother finish

- Polyurethane cup seals provide optimum performance

- Industrial hard chrome plated plunger prevents scratching and corrosion

- High strength steel construction

- High flow NPFT couplers

- Sealing ring to avoid contamination inside

➤ Additional advantages for flexible operation:

- Return spring provides quicker retraction

- Heavy duty, heat treated, grooved saddle provides better surface traction during operation

- Collar threads and base mounting holes for fixturing



TYPE		JH 3008	JH 5502	JH 5504	JH 5506
Load capacity	kg	29 200	50 000	50 000	50 000
Stroke	mm	210	51	101	158
Saddle	cm ²	41,9	70,9	70,9	70,9
Cylinder volume	ltr.	0,88	0,36	0,72	1,12
Height	A mm	387	176	227	283
Max. stroke	B mm	597	227	328	441
External Diameter	D mm	102	127	127	127
Piston	E mm	57	80	80	80
Depth of screw thread	K mm	30	-	-	-
Fitting of screw thread		3/8" - 18 NPTF	3/8" - 18 NPTF	3/8" - 18 NPTF	3/8" - 18 NPTF
Weight	kg	18,5	15,5	19,3	23,5
ORDER-NO.		32 030 210-EZ	32 055 051-EZ	32 055 101-EZ	32 055 158-EZ

TYPE		JH 5510	JH 5513	JH 7506	JH 7513
Load capacity	kg	50 000	50 000	74 000	74 000
Stroke	mm	260	337	156	333
Saddle	cm ²	70,9	70,9	103,9	103,9
Cylinder volume	ltr.	1,84	2,39	1,62	3,46
Height	A mm	385	461	285	492
Max. stroke	B mm	645	798	441	825
External Diameter	D mm	127	127	147	148
Piston	E mm	80	80	90	95
Depth of screw thread	K mm	-	-	-	-
Fitting of screw thread		3/8" - 18 NPTF	3/8" - 18 NPTF	3/8" - 18 NPTF	3/8" - 18 NPTF
Weight	kg	30,6	36,8	30,6	52,4
ORDER-NO.		32 055 260-EZ	32 055 337-EZ	32 075 156-EZ	32 075 333-EZ

TYPE		JH 10002	JH 10006	JH 10010
Load capacity	kg	94 500	94 500	94 500
Stroke	mm	51	168	260
Saddle	cm ²	132,7	132,7	132,7
Cylinder volume	ltr.	1,32	2,23	3,45
Height	A mm	219	357	449
Max. stroke	B mm	270	525	709
External Diameter	D mm	159	177	177
Piston	E mm	130	105	105
Depth of screw thread	K mm	57	-	-
Fitting of screw thread		3/8" - 18 NPTF	3/8" - 18 NPTF	3/8" - 18 NPTF
Weight	kg	51,5	52,4	68,7
ORDER-NO.		32 100 051-EZ	32 100 168-EZ	32 100 260-EZ

ALUMINUM CYLINDERS

Load capacity up to 100 metric tons

Advantages in detail:

- Sturdy construction for high demands
- Light weight, great performance
- Surface hard chrome plated
- Integrated return spring provides quick retraction
- Saddles are exchangeable



TYPE		JHU 2002	JHU 2004	JHU 2006
Load capacity	kg	20 000	20 000	20 000
Stroke	mm	50	100	150
Saddle	cm ²	31,17	31,17	31,17
Cylinder volume	ltr.	0,155	0,311	0,467
Height	A mm	174	224	274
Max. stroke	B mm	224	324	424
External Diameter	D mm	85	85	85
Piston	E mm	39,5	39,5	39,5
Depth of screw thread	K mm	12	12	12
Fitting of screw thread		3/8" - 18 NPTF	3/8" - 18 NPTF	3/8" - 18 NPTF
Weight	kg	3	3,7	4,4

ORDER-NO. ■ 32 020 050-EZU ■ 32 020 100-EZU ■ 32 020 150-EZU

TYPE		JHU 3002	JHU 3004
Load capacity	kg	30 000	30 000
Stroke	mm	50	100
Saddle	cm ²	44,18	44,18
Cylinder volume	ltr.	0,22	0,441
Height	A mm	181	231
Max. stroke	B mm	231	331
External Diameter	D mm	100	100
Piston	E mm	39,5	39,5
Depth of screw thread	K mm	12	12
Fitting of screw thread		3/8" - 18 NPTF	3/8" - 18 NPTF
Weight	kg	4,7	5,4

ORDER-NO. ■ 32 030 050-EZU ■ 32 030 100-EZU

TYPE		JHU 3006	JHU 5502	JHU 5504	JHU 5506	JHU 5508
Load capacity	kg	30 000	50 000	50 000	50 000	50 000
Stroke	mm	150	50	100	150	200
Saddle	cm ²	44,18	70,88	70,88	70,88	70,88
Cylinder volume	ltr.	0,662	0,354	0,708	1,063	1,417
Height	A mm	281	186	236	286	336
Max. stroke	B mm	431	236	336	436	536
External Diameter	D mm	100	130	130	130	130
Piston	E mm	39,5	70	70	70	70
Depth of screw thread	K mm	12	12	12	12	12
Fitting of screw thread		3/8" - 18 NPTF	3/8" - 18 NPTF	3/8" - 18 NPTF	3/8" - 18 NPTF	3/8" - 18 NPTF
Weight	kg	6,1	8,9	10,3	11,6	12,9

ORDER-NO. ■ 32 030 150-EZU ■ 32 050 050-EZU ■ 32 050 100-EZU ■ 32 050 150-EZU ■ 32 050 200-EZU

TYPE		JHU 5510	JHU 10004	JHU 10006	JHU 10008
Load capacity	kg	50 000	100 000	100 000	100 000
Stroke	mm	250	100	150	200
Saddle	cm ²	70,88	132,73	132,73	132,73
Cylinder volume	ltr.	1,772	1,327	1,99	2,654
Height	A mm	386	271	321	371
Max. stroke	B mm	636	371	471	571
External Diameter	D mm	130	180	180	180
Piston	E mm	70	70	70	70
Depth of screw thread	K mm	12	12	12	12
Fitting of screw thread		3/8" - 18 NPTF	3/8" - 18 NPTF	3/8" - 18 NPTF	3/8" - 18 NPTF
Weight	kg	14,2	19,8	22,1	24,4

ORDER-NO. ■ 32 050 250-EZU ■ 32 093 100-EZU ■ 32 093 150-EZU ■ 32 093 200-EZU

FLAT BODY CYLINDERS

Load capacity up to 140 metric tons

Advantages in detail:

➤ Long lasting and sturdy. Made of high quality solid materials:

- Cylinder housing and plunger made of high strength steel
- High flow couplers with dust cap
- Return spring provides quicker retraction
- Sealing ring to avoid contamination inside

➤ Additional advantage for use in confined spaces

- Compact design for use in confined spaces
- More ground clearance due to tilted coupler



For information on matching
ACCESSORIES
see Pages 34-38.

TYPE		JHF 0500	JHF 0503*	JHF 1005	JHF 2005	JHF 3005
Load capacity	kg	5 000	5 000	10 000	19 700	29 900
Stroke	mm	16	6	11	11	13
Saddle	cm ²	7,1	7,1	15,2	28,3	41,9
Cylinder volume	ltr.	0,01	0,01	0,02	0,03	0,05
Height	A mm	41,5	32	43	51	59
Max. stroke	B mm	57,5	38	54	62	71,7
Overall dimension	D1xD2 mm	61 x 41	61 x 41	84 x 56	102 x 76	117 x 97
Piston	E mm	25	25	38	51	64
Fitting of screw thread		3/8" - 18 NPTF	3/8" - 18 NPTF	3/8" - 18 NPTF	3/8" - 18 NPTF	3/8" - 18 NPTF
Weight	kg	1,3	0,5	1,5	2,7	4,4

ORDER-NO. ■ 32 005 016-FZ ■ 32 005 006-FZ ■ 32 010 011-FZ ■ 32 020 011-FZ ■ 32 030 013-FZ

Saddles of the flat body cylinders are non-exchangeable *Hydraulic coupler regular flow, JCR 38 M as counterpart



TYPE		JH 5006	JH 7506	JH 10006	JH 15006
Load capacity	kg	45 000	74 000	90 000	140 000
Stroke	mm	16	16	16	16
Saddle	cm ²	63,6	103,9	126,7	197,9
Cylinder volume	ltr.	0,1	0,17	0,2	0,32
Height	A mm	67	79,5	85,5	100
Max. stroke	B mm	83	95,5	101,5	116
Overall dimension	D1xD2 mm	140 x 114	165 x 140	177 x 152	215 x 190
Piston	E mm	90	89,9	90	118
Fitting of screw thread		3/8" - 18 NPTF	3/8" - 18 NPTF	3/8" - 18 NPTF	3/8" - 18 NPTF
Weight	kg	67,7	11,5	14,3	24,2

ORDER-NO. ■ 32 050 016-FZ ■ 32 075 016-FZ ■ 32 100 016-FZ ■ 32 150 016-FZ

FLAT BODY CYLINDER KIT

Set		JHF 0503 B	JHF 1005 B	JHF 2005 B	JHF 3005 B	JHF 5006 B
Type of cylinder		JHF 0503	JHF 1005	JHF 2005	JHF 3005	JHF 5006
Load capacity	kg	5 000	10 000	19 700	29 900	45 000
Stroke	mm	6	11	11	13	16
Height	mm	32	43	51	59	67
Adapter plate height	mm	6/13/25/33	10/20/40	10/20/40	10/20/40	10/20/40

ORDER-NO. ■ 32 005 006-FZS ■ 32 010 011-FZS ■ 32 020 011-FZS ■ 32 030 013-FZS ■ 32 050 016-FZS

LOW PROFILE CYLINDERS

Load capacity up to 90 metric tons

Advantages in detail:

- Cylinder housing made of high strength steel
- Hard-chrome plated plunger and buffed cylinder interior space provide long-life use and high abrasion resistance
- More ground clearance due to tilted coupler (JHL 1001, 2002 and 3002)
- Sealing ring to prevent contamination inside



TYPE		JHL 1001	JHL 1001-D*	JHL 2002
Load capacity	kg	10 000	10 000	20 000
Stroke	mm	38	38	44
Saddle	cm ²	15,2	15,2	28,3
Cylinder volume	ltr.	0,06	0,06	0,13
Height	A mm	89	88	99
Max. stroke	B mm	127	127	144
Outside Diameter	D ø mm	70	70	92
Piston	mm	38	38	51
Fitting of screw thread		3/8" - 18 NPTF	3/8" - 18 NPTF	3/8" - 18 NPTF
Weight	kg	2,5	2,5	5

ORDER-NO. ■ 32 010 038-KZ ■ 32 010 038-D ■ 32 020 044-KZ

TYPE		JHL 3002	JHL 5002	JHL 10002
Load capacity	kg	30 000	45 000	90 000
Stroke	mm	62	60	57
Saddle	cm ²	41,8	63,6	126,7
Cylinder volume	ltr.	0,26	0,38	0,72
Height	A mm	117	112	141
Max. stroke	B mm	179	182	198
Outside Diameter	D ø mm	102	124	165
Piston	mm	63,5	70	90
Fitting of screw thread		3/8" - 18 NPTF	3/8" - 18 NPTF	3/8" - 18 NPTF
Weight	kg	6,8	9,9	20,6

ORDER-NO. ■ 32 030 062-KZ ■ 32 050 060-KZ ■ 32 100 057-KZ

*Set with adapter plates 1/2/3 inch

PULL CYLINDERS

Load capacity up to 30 metric tons

Advantages in detail:

- Cylinder housing made of high strength steel
- Hard-chrome plated plunger and buffed cylinder interior space provide long-life use and high abrasion resistance
- Grooving in the top of the plunger rod prevent the load from tilting
- Conical plunger threads



- ① Screw-on adapter M16 x 1,5
- ② Screw-on adapter M28 x 1,5
- ③ Thread M30 x 2



TYPE		JHP 0205	JHP 0505	JHP 1006	JHPB 1006A	JHPB 3006A
Load capacity	kg	2 000	5 000	10 000	10 000	30 000
Stroke	mm	127	141	151	151	155
Saddle	cm ²	3,6	7,4	15,7	-	-
Cylinder volume	ltr.	0,05	0,1	0,24	0,24	0,63
Height	A mm	267	303	299	565	1 085
Max. stroke	B mm	394	444	450	716	1 240
External Diameter	D mm	48	57,2	85	85	114,3
Rod diameter	E mm	28,6	42,9	55	55	85
Length of screw thread	mm	28	32	-	-	-
External thread	mm	M16 x 1,5	M28 x 1,5	M30 x 2	-	-
Internal thread	mm	M16 x 1,5	M28 x 1,5	M30 x 2	-	-
Fitting of screw thread		3/8" - 18 NPTF	3/8" - 18 NPTF	-	-	-
Weight	kg	2,9	4,2	9,5	12	47,4

ORDER-NO. ■ 32 002 127-ZZ ■ 32 005 141-ZZ ■ 32 010 151-ZZ ■ 32 010 151-ZZA ■ 32 030 155-ZZA

HOLLOW PLUNGER CYLINDERS

Load capacity up to 100 metric tons

Advantages in detail:

- Ideal for pulling and pushing applications
- Strong high performance return spring enable a fast plunger retract
- Body and plunger made of high-quality steel



For information on matching
ACCESSORIES
see Pages
34-38.

TYPE		JHC 1201 T*	JHC 1202 T*	JHC 1202 XT**	JHC 1203 XT**
Load capacity	kg	12 000	12 000	12 000	12 000
Stroke	mm	8	41	41	76
Saddle	cm ²	18,8	18,8	18,8	18,8
Cylinder volume	ltr.	0,02	0,08	0,08	0,14
Height	A mm	60	120,5	120,5	184
Max. stroke	B mm	67,8	161,5	161,5	260
Outside Diameter	D ø mm	70	70	70	70
Inside diameter	E ø mm	19	19	19	19
Depth of screw thread	K mm	30	30	30	30
Fitting of screw thread		1/4" - 18 NPTF***	1/4" - 18 NPTF***	1/4" - 18 NPTF***	3/8" - 18 NPTF
Weight	kg	1,5	2,8	2,8	3,9
ORDER-NO.		32 012 008-HZ	32 012 041-HZ	32 012 041-HZX	32 012 076-HZ

*Piston inner surface with thread **Piston inner surface flat *** Will be delivered with adapter JCA 3814 (3/8" - 18 NPTF) + and hydraulic coupling JCH 38 F.

TYPE		JHC 2002 T*	JHC 2006 T*	JHC 3002 T*	JHC 3006 T*
Load capacity	kg	20 000	20 000	30 000	30 000
Stroke	mm	51	154	64	155
Saddle	cm ²	31,6	31,6	40,8	40,8
Cylinder volume	ltr.	0,16	0,49	0,26	0,63
Height	A mm	162	306	179	330,7
Max. stroke	B mm	213	460	243	486
Outside Diameter	D ø mm	99,5	99,5	114,3	114,3
Inside diameter	E ø mm	27	27	33	33
Depth of screw thread	K mm	38	38	42,2	42,2
Fitting of screw thread		3/8" - 18 NPTF	3/8" - 18 NPTF	3/8" - 18 NPTF	3/8" - 18 NPTF
Weight	kg	7,2 / 15.9	13,4 / 29.5	10,4 / 22.9	19,5 / 43.0
ORDER-NO.		32 020 051-HZ	32 020 154-HZ	32 030 064-HZ	32 030 155-HZ

TYPE		JHC 6003 T*	JHC 6006 T*	JHC 10003 T*
Load capacity	kg	60 000	60 000	100 000
Stroke	mm	76	152	76
Saddle	cm ²	84,2	84,2	142,8
Cylinder volume	ltr.	0,64	1,28	1,09
Height	A mm	248,2	324,2	254
Max. stroke	B mm	324,3	476,5	330,1
Outside Diameter	D ø mm	158,8	158,8	213
Inside diameter	E ø mm	54	54	79
Depth of screw thread	K mm	48,5	48,5	60,5
Fitting of screw thread		3/8" - 18 NPTF	3/8" - 18 NPTF	3/8" - 18 NPTF
Weight	kg	29,8	36,8	51,4
ORDER-NO.		32 060 076-HZ	32 060 152-HZ	32 100 076-HZ

*Piston inner surface with thread

LOCK NUT CYLINDERS

Load capacity up to 89 metric tons

Advantages in detail:

- Single acting cylinder with mechanical safety lock nut
- Overflow port prevents cylinders from overtravel
- Designed to support loads without hydraulic pressure
- Solid steel cylinder body



TYPE		JHLN 5502	JHLN 5504	JHLN 5506
Load capacity	kg	48 900	48 900	48 900
Stroke	mm	50	100	150
Saddle	cm ²	70,9	70,9	70,9
Cylinder volume	ltr.	0,35	0,709	1,06
Height	mm	164	214	264
Max. stroke	mm	214	314	414
External diameter	ø mm	125	125	125
Piston	ø mm	71	71	71
Length lock nut	mm	36	36	36
Fitting of screw thread		3/8" - 18 NPTF	3/8" - 18 NPTF	3/8" - 18 NPTF
Weight	kg	15,4	20,2	25
ORDER-NO.		32 050 050-HLN	32 050 100-HLN	32 050 150-HLN

TYPE		JHLN 5508	JHLN 5510	JHLN 5512
Load capacity	kg	48 900	48 900	48 900
Stroke	mm	200	250	300
Saddle	cm ²	70,9	70,9	70,9
Cylinder volume	ltr.	1,41	1,77	2,12
Height	mm	314	364	414
Max. stroke	mm	514	614	714
External diameter	ø mm	125	125	125
Piston	ø mm	71	71	71
Length lock nut	mm	36	36	36
Fitting of screw thread		3/8" - 18 NPTF	3/8" - 18 NPTF	3/8" - 18 NPTF
Weight	kg	29,9	34,7	39,5
ORDER-NO.		32 050 200-HLN	32 050 250-HLN	32 050 300-HLN

TYPE		JHLN 10002	JHLN 10004	JHLN 10006
Load capacity	kg	89 000	89 000	89 000
Stroke	mm	50	100	150
Saddle	cm ²	132,7	132,7	132,7
Cylinder volume	ltr.	0,63	1,32	1,99
Height	mm	187	237	287
Max. stroke	mm	237	337	437
External diameter	ø mm	165	165	165
Piston	ø mm	71	71	71
Length lock nut	mm	46	46	46
Fitting of screw thread		3/8" - 18 NPTF	3/8" - 18 NPTF	3/8" - 18 NPTF
Weight	kg	30,5	38,9	47,3
ORDER-NO.		32 100 050-HLN	32 100 100-HLN	32 100 150-HLN

TYPE		JHLN 10008	JHLN 10010	JHLN 10012
Load capacity	kg	89 000	89 000	89 000
Stroke	mm	200	250	300
Saddle	cm ²	132,7	132,7	132,7
Cylinder volume	ltr.	2,65	3,31	3,98
Height	mm	337	387	437
Max. stroke	mm	537	637	737
External diameter	ø mm	165	165	165
Piston	ø mm	71	71	71
Length lock nut	mm	46	46	46
Fitting of screw thread		3/8" - 18 NPTF	3/8" - 18 NPTF	3/8" - 18 NPTF
Weight	kg	55,6	64	72,4
ORDER-NO.		32 100 200-HLN	32 100 250-HLN	32 100 300-HLN

LOCK NUT CYLINDERS

Load capacity up to 142 metric tons



JHLN 15006



JHLNF 6002



JHLNF 10002

TYPE		JHLN 15002	JHLN 15004	JHLN 15006	JHLN 15008
Load capacity	kg	133 400	133 400	133 400	133 400
Stroke	mm	50	100	150	200
Saddle	cm ²	201	201	201	201
Cylinder volume	ltr.	0,52	0,38	0,78	0,91
Height	mm	209	237	309	359
Max. stroke	mm	259	337	459	559
External diameter	ø mm	205	205	205	205
Piston	ø mm	130	130	130	130
Length lock nut	mm	44	44	44	44
Fitting of screw thread		3/8" - 18 NPTF	3/8" - 18 NPTF	3/8" - 18 NPTF	3/8" - 18 NPTF
Weight	kg	52,8	38,9	78,8	91,7

ORDER-NO. ■ 32 150 050-HLN ■ 32 150 100-HLN ■ 32 150 150-HLN ■ 32 150 200-HLN

LOW PROFILE LOCK NUT CYLINDER						
TYPE		JHLN 15010	JHLN 15012	JHLNF 6002	JHLNF 10002	JHLNF 16002
Load capacity	kg	133 400	133 400	53 400	89 000	142 300
Stroke	mm	250	300	50	50	45
Saddle	cm ²	201	201	82	110	148
Cylinder volume	ltr.	1,04	1,17	0,433	0,725	1,031
Height	mm	409	459	125	137	148
Max. stroke	mm	659	759	175	187	193
External diameter	ø mm	205	205	140	175	220
Piston	ø mm	130	130	105	136	171
Length lock nut	mm	44	44	28	31	40
Fitting of screw thread		3/8" - 18 NPTF	3/8" - 18 NPTF	3/8" - 18 NPTF	3/8" - 18 NPTF	3/8" - 18 NPTF
Weight	kg	104,7	117,6	14,2	24,5	41,2

ORDER-NO. ■ 32 150 250-HLN ■ 32 150 300-HLN ■ 32 060 050-FVZ ■ 32 100 050-FVZ ■ 32 160 045-FVZ



DOUBLE ACTING CYLINDERS

Load capacity up to 50 metric tons

Advantages in detail:

➤ Long lasting and sturdy. Made of high quality solid materials:

- High strength steel construction manufactured from solid bar Industrial hard chrome plated plunger prevents corrosion

- One piece high grade alloy bearing for side load protection and long life High flow NPTF-couplers

- Sealing ring to avoid contamination inside

➤ Additional advantages for flexible operations:

- Heavy duty, heat treated, grooved saddle provides better surface traction during operation

- Collar threads and internal threads for mounting with two connections, ideal for pulling and pushing (from JHD 7506 up with 2 carry handles)



TYPE		JHD 1010	JHD 1012	JHD 3008
Load capacity push	kg	10 000	10 000	30 000
Load capacity pull	kg	3 000	3 000	14 000
Stroke	mm	255	304	207
Push saddle	cm ²	14,4	14,4	41,9
Pull saddle	cm ²	4,8	4,8	20,6
Cylinder volume push	ltr.	0,12	0,15	0,43
Cylinder volume pull	ltr.	0,37	0,44	0,87
Height	A mm	410	458	389
Max. stroke	B mm	665	762	596
External diameter	D ø mm	73	73	101
Piston	E ø mm	34,9	34,9	54,1
Depth of screw thread	mm	25	25	25
Fitting of screw thread		3/8" - 18 NPTF	3/8" - 18 NPTF	3/8" - 18 NPTF
Weight	kg	12,1	13,6	19,5
ORDER-NO.		32 010 255-DZ	32 010 304-DZ	32 030 207-DZ

TYPE		JHD 3014	JHD 5506	JHD 5513
Load capacity push	kg	30 000	50 000	50 000
Load capacity pull	kg	14 000	14 000	14 000
Stroke	mm	368	157	335
Push saddle	cm ²	41,9	70,9	70,9
Pull saddle	cm ²	20,6	20,6	20,6
Cylinder volume push	ltr.	0,76	0,32	0,69
Cylinder volume pull	ltr.	1,54	1,11	2,38
Height	A mm	550	331	509
Max. stroke	B mm	918	488	844
External diameter	D ø mm	101	127	127
Piston	E ø mm	54,1	79,5	79,5
Depth of screw thread	mm	25	25	25
Fitting of screw thread		3/8" - 18 NPTF	3/8" - 18 NPTF	3/8" - 18 NPTF
Weight	kg	27,5	29,4	44,6
ORDER-NO.		32 030 368-DZ	32 050 157-DZ	32 050 335-DZ

DOUBLE ACTING CYLINDERS

Load capacity up to 94 metric tons



TYPE		JHD 5520	JHD 7506	JHD 7513
Load capacity push	kg	50 000	74 000	74 000
Load capacity pull	kg	14 000	23 000	23 000
Stroke	mm	511	155	333
Push saddle	cm ²	70,9	103,8	103,8
Pull saddle	cm ²	20,6	33	33
Cylinder volume push	ltr.	1,05	0,51	1,1
Cylinder volume pull	ltr.	3,62	1,61	3,45
Height	A mm	733	348	526
Max. stroke	B mm	1 244	503	859
External diameter	D ø mm	127	146	146
Piston	E ø mm	79,5	95,2	95,2
Depth of screw thread	mm	25	38	38
Fitting of screw thread		3/8" - 18 NPTF	3/8" - 18 NPTF	3/8" - 18 NPTF
Weight	kg	63	39,6	59,6

ORDER-NO. ■ 32 050 511-DZ ■ 32 075 155-DZ ■ 32 075 333-DZ

TYPE		JHD 10006	JHD 10013	JHD 10018
Load capacity push	kg	94 000	94 000	94 000
Load capacity pull	kg	44 000	44 000	44 000
Stroke	mm	167	333	461
Push saddle	cm ²	132,7	132,7	132,7
Pull saddle	cm ²	61,8	61,8	61,8
Cylinder volume push	ltr.	1,03	2,06	2,85
Cylinder volume pull	ltr.	2,22	4,42	6,12
Height	A mm	357	524	687
Max. stroke	B mm	524	857	1 148
External diameter	D ø mm	177	177	177
Piston	E ø mm	95,2	95,2	95,2
Depth of screw thread	mm	35	35	35
Fitting of screw thread		3/8" - 18 NPTF	3/8" - 18 NPTF	3/8" - 18 NPTF
Weight	kg	60,1	58,2	110

ORDER-NO. ■ 32 095 167-DZ ■ 32 095 333-DZ ■ 32 095 461-DZ

HAND PUMPS

Light weight, powerful and sturdy

Advantages in detail:

- Two-stage hand pump for fast positioning to the load (not with JP 601 S)
- Pressure relief valve to prevent overload of the tools
- JP 350 and JP 1000 in aluminum design, therefore weight reduction and optimal corrosion protection
- Holding valve to prevent subsidence of the load
- Big handwheel on the lowering valve for ideal apportioning while lowering
- Ergonomically shaped handle and pump lever
- Handy oil pour hole on the top side of the hand pump



For information on matching
ACCESSORIES
see Pages 34-38.



TYPE		JP 601 S	JP 350	JP 1000
Oil volume usable	ltr.	0,6	0,35	1
Pressure rating 1st stage	bar	x*	14	14
Pressure rating 2nd stage	bar	700	700	700
Oil displacement per stroke 1st stage	ltr.	x*	0,003	0,0132
Oil displacement per stroke 2nd stage	ltr.	0,0025	0,00075	0,0023
Handle effort	kg	49	39	58,5
Length	G mm	553	377	542
Width	H mm	132	85	120
Height	B mm	164	150	162
Fitting of screw thread		3/8" - 18 NPTF	1/4" - 18 NPTF	3/8" - 18 NPTF
Weight	kg	5,9	3	9,2

ORDER-NO. ■ 34 060 000-EZP ■ 34 035 000-EZP ■ 34 100 000-EZP

HAND/FOOT PUMPS

Light weight, powerful and sturdy



TYPE		JP 1201	JP 2301	JP 2301 M**	JP 4301
Oil volume usable	ltr.	1,1	2	2,1	4,1
Pressure rating 1st stage	bar	14	12	14	14
Pressure rating 2nd stage	bar	700	700	700	700
Oil displacement per stroke 1st stage	ltr.	0,0132	0,0132	0,0132	0,0132
Oil displacement per stroke 2nd stage	ltr.	0,0023	0,0023	0,0023	0,0023
Handle effort	kg	44	58,5	44	44
Length	G mm	585	542	602	542
Width	H mm	135	120	102	120
Height	B mm	171	169	169	169
Fitting of screw thread		3/8" - 18 NPTF	3/8" - 18 NPTF	3/8" - 18 NPTF	3/8" - 18 NPTF
Weight	kg	6,2	12,5	14,6	17

ORDER-NO. ■ 34 120 000-EZP ■ 34 210 000-EZP ■ 34 210 000-DZP ■ 34 430 000-EZP

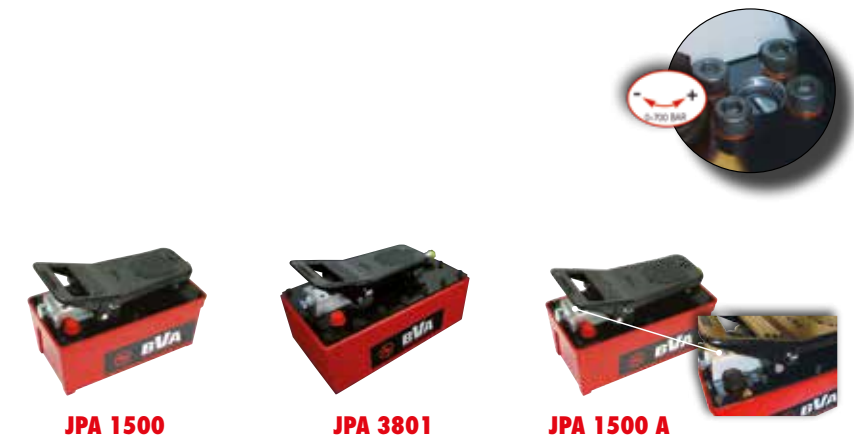
TYPE		JP 4301 M**	JP 8701	JP 8701 M**	JP 571 FP***
Oil volume usable	ltr.	4,1	7,8	7,8	0,5
Pressure rating 1st stage	bar	14	20	20	16
Pressure rating 2nd stage	bar	700	700	700	700
Oil displacement per stroke 1st stage	ltr.	0,0132	0,1263	0,1263	0,0132
Oil displacement per stroke 2nd stage	ltr.	0,0023	0,0048	0,0048	0,0023
Handle effort	kg	44	63	63	57,5
Length	G mm	665	771	771	613
Width	H mm	135	387	387	195
Height	B mm	195	295	295	179
Fitting of screw thread		3/8" - 18 NPTF	3/8" - 18 NPTF	3/8" - 18 NPTF	3/8" - 18 NPTF
Weight	kg	19	35	35,2	8,1

ORDER-NO. ■ 34 430 000-DZP ■ 34 870 000-EZP ■ 34 870 000-DZP ■ 34 057 000-FP

Hand pump for double acting cylinders *Foot pump for single acting cylinders

AIR HYDRAULIC PUMPS

Light weight, powerful and sturdy



TYPE		JPA 600	JPA 1500	JPA 2000	JPA 3801
Oil volume usable	ltr.	0,6	1,5	2	3,8
Working pressure	bar	700	700	700	700
Usable for cylinder type		single acting	single acting	single acting	single acting
Flow rate without load	ltr.	1	1,08	1,07	1,07
Flow rate with load	ltr.	0,15	0,18	0,18	0,15
Compressed air supply	bar	7-14	7-14	7-14	7-14
Length	A mm	427	263	294	321
Width	E mm	142	136	152	187
Height	C mm	178	185	201	187
Fitting of screw thread		3/8" - 18 NPTF	3/8" - 18 NPTF	3/8" - 18 NPTF	3/8" - 18 NPTF
Weight	kg	6,4	8,2	9,2	12,3

ORDER-NO. ■ 34 600 000-LP ■ 34 150 000-LP ■ 34 200 000-LP ■ 34 380 000-LP

TYPE		JPA 1500 A*	JPA 1500 L**	JPA 3801 L**	JPA 1500 M***	JPA 3801 M***
Oil volume usable	ltr.	1,5	1,5	3,8	1,5	3,8
Working pressure	bar	0 bis 700	700	700	700	700
Usable for cylinder type		single acting	single acting	single acting	double acting	double acting
Flow rate without load	ltr.	1,08	1	1	1,08	1
Flow rate with load	ltr.	0,18	0,16	0,16	0,18	0,18
Compressed air supply	bar	7-14	7-14	7-14	7-14	7-14
Length	A mm	263	279	321	263	321
Width	E mm	136	136	187	136	187
Height	C mm	185	204	207	203	205
Fitting of screw thread		3/8" - 18 NPTF	3/8" - 18 NPTF	3/8" - 18 NPTF	3/8" - 18 NPTF	3/8" - 18 NPTF
Weight	kg	8,2	8,8	13,3	10	13,5

ORDER-NO. ■ 34 150 000-LPE ■ 34 150 000-LPF ■ 34 380 000-LPF ■ 34 150 000-LPM ■ 34 380 000-LPM

*Working pressure adjustable **Without foot panel, operable with cable remote control (3,5 m/ 137,8") ***Double-acting, manual release valve

ELECTRIC PUMPS

Portable, light weight, compact design

Please refer to page 38 for additional information about remote control for hydraulic power unit



JPE 30 M4N 01 D



JPE 40 M4N 02 D



JPE 50 M4N 03 D



JPE 50 M4N 03 D



JPEW 03

TYPE		JPE 30 M4N 01 D	JPE 40 M4N 02 D	JPE 50 M4N 03 D
Oil volume usable	ltr.	3,8	7,6	11,4
Pressure rating 1st stage	bar	25	48	48
Pressure rating 2nd stage	bar	700	700	700
Oil displacement per stroke 1st stroke	ltr.	4,5	4,2	5,1
Oil displacement per stroke 2nd stroke	ltr.	0,22	0,46	0,69
Diameter (LxWxH)	mm	379 x 261 x 485	421 x 305 x 454	421 x 305 x 502
Power source hydraulic		3/8" - 18 NPTF	3/8" - 18 NPTF	3/8" - 18 NPTF
Power source electric	V	230	230	230
Loudness	dB	80	80	80
Type of valve		manually	manually	manually
Valve		4-port 3-position	4-port 3-position	4-port 3-position
Weight	kg	28,5	33	41,5

ORDER-NO. ■ 34 030 M4N 01D-PE ■ 34 040 M4N 02D-PE ■ 34 050 M4N 03D-PE

TYPE		JPE 60 M4N 05 D	JPE 20 M4N 01 C
Oil volume usable	ltr.	19,4	3,8
Pressure rating 1st stage	bar	48	13
Pressure rating 2nd stage	bar	700	0-700*
Oil displacement per stroke 1st stroke	ltr.	6,3	4,2
Oil displacement per stroke 2nd stroke	ltr.	1,22	0,22
Diameter (LxWxH)	mm	421 x 305 x 674	34 x 26,5 x 32,5
Power source hydraulic		3/8" - 18 NPTF	3/8" - 18 NPTF
Power source electric	V	230	230
Loudness	dB	80	80
Type of valve		manually	manually
Valve		4-port 3-position	4-port 3-position
Weight	kg	47	17

ORDER-NO. ■ 34 060 M4N 05D-PE ■ 34 020 M4N 01C-PE

*Pressure is adjustable incl. manometer

TYPE		JPE 30 S4N 01 D	JPE 40 S4N 02 D	JPE 50 S4N 03 D
Oil volume usable	ltr.	3,8	7,6	11,4
Pressure rating 1st stage	bar	25	48	48
Pressure rating 2nd stage	bar	700	700	700
Oil displacement per stroke 1st stroke	ltr.	3,9	4,1	6,3
Oil displacement per stroke 2nd stroke	ltr.	0,24	0,49	0,82
Diameter (LxWxH)	mm	366 x 310 x 485	407 x 321 x 454	407 x 321 x 502
Power source hydraulic		3/8" - 18 NPTF	3/8" - 18 NPTF	3/8" - 18 NPTF
Power source electric	V	230	230	230
Loudness	dB	80	80	80
Type of valve		Magnet valve	Magnet valve	Magnet valve
Valve		4-port 3-position	4-port 3-position	4-port 3-position
Weight	kg	33,5	38,5	46,6

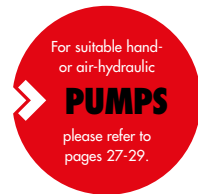
ORDER-NO. ■ 34 030 S4N 01D-PE ■ 34 040 S4N 02D-PE ■ 34 050 S4N 03D-PE

HYDRAULIC SPREADERS

Small and powerful

Advantages in detail:

- Designed to work in confined working areas
- Jaws close by spring return after the pressure is released
- High strength forged steel



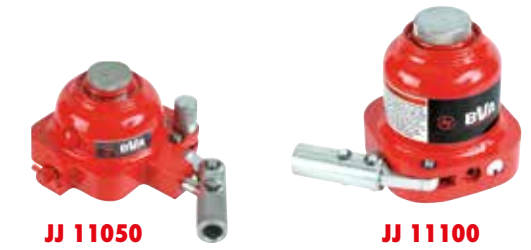
TYPE		JSR 05	JSR 10	JHFSS 14	JMFSS 08 (MANUELL)
Expanding force	kg	500	1 000	14 000	8 000
Oil displacement	ltr.	0,09	0,14	0,08	-
Dimension opened	A mm	90	99	31-61	31-61
Length x Width	B x D mm	192 x 52	167 x 55	300 x 126	300 x 126
Minimum height	C mm	13 / 0.5"	12	6	6
Height	E mm	60	56	-	-
Weight	kg	2,2	2,2	10	9,4
ORDER-NO.		32 000 500-SP	32 001 000-SP	32 014 000-SP	32 008 000-SP

MINI JACKS

Small and powerful

Advantages in detail:

- Low profile jacks
- Integrated hand pump
- Compact and light weight



TYPE		JJ 11050	JJ 11055	JJ 11100	JJ 11200
Load capacity	kg	5 000	5 000	10 000	20 000
Height	mm	60	86	121	130
Stroke	mm	19	38	41	41
Length	mm	105	105	124	137
Width	mm	120	120	110	121
Weight	kg	2,1	2,4	5,7	7,6
ORDER-NO.		32 005 019-MH	32 005 038-MH	32 010 041-MH	32 020 041-MH

USEFUL ACCESSORIES



HYDRAULIC HOSES INNER DIAMETER 1/4"

TYPE	JCS 3814-1	JCS 3814-2	JCS 3814-3	
Length	m	1	2	3
Inside diameter	ø mm	6,35	6,35	6,35
Screw thread		1/4" - 18 NPTF	1/4" - 18 NPTF	1/4" - 18 NPTF
Working pressure	bar	700	700	700
Weight	kg	1,5	2,4	2,7
ORDER-NO.	■ 33 038 014-105		■ 33 038 014-185	■ 33 038 014-305

TYPE	JCS 3814-4	JCS 3814-6	JCS 3814-10	
Length	m	4	6	10
Inside diameter	ø mm	6,35	6,35	6,35
Screw thread		1/4" - 18 NPTF	1/4" - 18 NPTF	1/4" - 18 NPTF
Working pressure	bar	700	700	700
Weight	kg	2,9	3,1	3,9
ORDER-NO.	■ 33 038 014-405		■ 33 038 014-605	■ 33 038 014-995



COUPLINGS

TYPE	JCH 38	JCH 38 M*	JCH 38 F**	
	Set complete	Nipple	Coupling	
Inside diameter	ø mm	9,5	9,5	9,5
Connection thread		3/8" - 18 NPTF	3/8" - 18 NPTF	3/8" - 18 NPTF
Length connected	mm	81	-	-
Length coupling	mm	-	-	72,1
Wrench size	mm	-	24	25
ORDER-NO.	■ 33 000 038-RAS		■ 33 000 038-HAM	■ 33 000 038-HAW

TYPE	JCR 38	JCR 38 M*	JCR 38 F**	
	Set complete	Nipple	Coupling	
Inside diameter	ø mm	6,35	6,35	6,35
Connection thread		3/8" - 18 NPTF	3/8" - 18 NPTF	3/8" - 18 NPTF
Length connected	mm	80	-	-
Length coupling	mm	-	-	55,9
Wrench size	mm	-	24	19
ORDER-NO.	■ 33 000 038-RAS		■ 33 000 038-RAM	■ 33 000 038-RAW

DUST COVER FOR JCH 38/JCH 38F/JCH 38M

TYPE	JCDC 38
ORDER-NO.	■ 83 000 000-SK

*Internal thread 3/8" - 18 NPTF **External thread 3/8" - 18 NPTF



GAUGES

TYPE	JGB 1460	JGD 1480	
Version	Silicone filled		Digital
External diameter	A ø mm	63	80
Pressure range	bar	0-700	0-700
Screw-in thread	C	1/4" - 18 NPTF	1/4" - 18 NPTF
Total height	D mm	85	105
ORDER-NO.	■ 33 000 014-M		■ 33 000 014-MD



GAUGE ADAPTER

TYPE	JCF 3814	JCF 3814-45	
Length	A mm	130	55
Screw-in thread gauge	C	1/4"	1/4"
External thread	D	3/8" - 18 NPTF	1/4" - 18 NPTF
Internal thread	E	3/8" - 18 NPTF	1/8" - 18 NPTF
Wrench size	F mm	32	23
ORDER-NO.	■ 33 000 038-AM		■ 33 038 014-AM-45



COUPLING REDUCING

TYPE	JCB 1438	JCA 3814	
External thread	C	3/8" - 18 NPTF	1/4" - 18 NPTF
Internal thread	D	1/4" - 18 NPTF	3/8" - 18 NPTF
Length	A mm	22	35
Wrench size	B mm	17	23
ORDER-NO.	■ 33 014 038-A		■ 33 038 014-A

USEFUL ACCESSORIES



FITTINGS

TYPE	JFT 045	JFT 101	JFT 103	JFT 106
External thread	3/8" - 18 NPTF	3/8" - 18 NPTF	-	-
Internal thread	3/8" - 18 NPTF	3/8" - 18 NPTF	2 x 3/8" - 18 NPTF	3 x 3/8" - 18 NPTF
Length	mm 28	46	30	45
Wrench size	mm 22	26	26	26
ORDER-NO.	34 WINKEL45-3838	34 WINKEL 3838	34 2WEGE 3838-1	34 3WEGE 3838-1



TYPE	JFT 107	JFT 114	JFT 105
External thread	-	3/8" - 18 NPTF	-
Internal thread	2 x 3/8" - 18 NPTF	-	4 x 3/8" - 18 NPTF
Length	mm 35,5	38	45
Wrench size	mm 26	19	26
ORDER-NO.	34 WINKEL90-381	34 2WEGE 3838-A	34 4WEGE 3838-1



SADDLES FOR SINGLE ACTING CYLINDERS

TYPE	JSD 05	JSD 10	JSD 15	JSD 25	JSDT 05
Top plate	grooved	grooved	grooved	grooved	moveable
For cylinders up to	kg 5 000	10 000	15 000	25 000	5 000
Outside diameter	A ø mm 25	35	38	50	25
Thickness	B mm 6	6	7	7	12
Inside diameter	C ø mm 17	22	22	36	17
Height	D mm 20	27	30	29	30
ORDER-NO.	33 005 000-EZD	33 010 000-EZD	33 015 000-EZD	33 025 000-EZD	33 005 000-EZDB



TYPE	JSDT 10	JSDT 15	JSDT 25	JSDT 55	JHTD 10
Top plate	moveable	moveable	moveable	moveable	Thread
For cylinders up to	kg 10 000	15 000	25 000	55 000	10 000
Outside diameter	A ø mm 35	38	50	71	1 1/4" - 1 1/2 NPTF
Thickness	B mm 16	16	15	14	24
Inside diameter	C ø mm 22	22	29	13	1" - 8UNC
Height	D mm 38	40	40	33	45
ORDER-NO.	33 010 000-EZDB	33 015 000-EZDB	33 025 000-EZDB	33 055 000-EZDB	33 010 000-EZDG



PLUNGER CLEVIS WITH THREAD

TYPE	JCEP 05	JCEP 10	JCEP 15	JCEP 25
Load capacity	kg 5 000	10 000	15 000	25 000
Screw thread	A 3/4" - 16 UNF	1" - 8 UNC	1" - 8 UNC	1 1/2" - 16
Outside diameter	B ø mm 29	43	43	57
Total length	C mm 57	84	84	97
Diameter	D ø mm 16	22	22	32
Thread length	E mm 16	19	19	22
Width	F mm 14	25	25	38
ORDER-NO.	33 005 000-EZKA	33 010 000-EZKA	33 015 000-EZKA	33 025 000-EZKA



TANG WITHOUT THREAD

TYPE	JCEB 05	JCEB 10	JCEB 15	JCEB 25
Load capacity	kg 5 000	10 000	15 000	25 000
Screw thread	A ø mm 38,6	57,9	70,4	86,4
Outside diameter	B ø mm 44	64	76	95
Total length	C mm 54	73	73	86
Inside diameter	D ø mm 16	22	22	32
Height	E mm 7	43	43	57
Width	F ø mm 29	8	10	14
ORDER-NO.	33 005 000-EZBA	33 010 000-EZBA	33 015 000-EZBA	33 025 000-EZBA



CYLINDER BASE

TYPE	JCB 05	JCB 10	JCB 15	JCB 25
For cylinders capacity	kg 5 000	10 000	15 000	25 000
Height base plate	A mm 8	10	12	16
Total height	B mm 118	120	122	126
Dimension base plate	C mm 200 x 200	230 x 230	254 x 254	280 x 280
Bore diameter	D ø mm 39	58	70	87
ORDER-NO.	33 005 000-EZF	33 010 000-EZF	33 015 000-EZF	33 025 000-EZF



VALVES

TYPE	JCVN 1	JCVN 3	JCVR 3	JPW 3	JPW 4	JCVLS 3
	Needle valve	Needle valve	Pressure control valve	Manual operated check valve	Manual operated check valve	Pressure relief valve
Connection	1/4" - 18 NPTF	3/8" - 18 NPTF	3/8" - 18 NPTF	3/8" - 18 NPTF	3/8" - 18 NPTF	3/8" - 18 NPTF
ORDER-NO.	33 000 014-VN	33 00 038-VN	33 000 038-DM	33 000 038-VM3	33 000 038-VM4	33 000 038-ASV

USEFUL ACCESSORIES



REMOTE CONTROL FOR HYDRAULIC POWER UNIT

TYPE	■ JPEW 03		
Length cable	m	2	
ORDER-NO.	■ 34 000 000-PEW		



PULL CYLINDER CLEVIS

TYPE	■ JCP 02		■ JCP 05	■ JCP 10
Length	85		100	160
Width	kg	70	83	-
Height	ø mm	40	48	65
Notch	mm	20	20	35
Kind of threads	ø mm	M16 x 1,5	M28 x 1,5	M30 x 2
ORDER-NO.	■ 33 002 000-ZZA		■ 33 005 000-ZZA	■ 33 010 000-ZZA

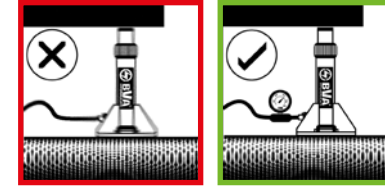


MANIFOLDS

TYPE	■ JCM 7		■ JCM 14	■ JMFC 2	■ JMFC 4
Number of ports	7		7	2	4
Length	mm	230	398	152	305
Width	mm	57	57	66	66
Height	mm	32	32	105	105
Port size	3/8" - 18 NPTF		3/8" - 18 NPTF	3/8" - 18 NPTF	3/8" - 18 NPTF
incl. needle valve	No		No	Yes	Yes
ORDER-NO.	■ 33 007 007-V		■ 33 007 014-V	■ 33 002 038-V	■ 33 004 038-V

SAFETY INSTRUCTIONS

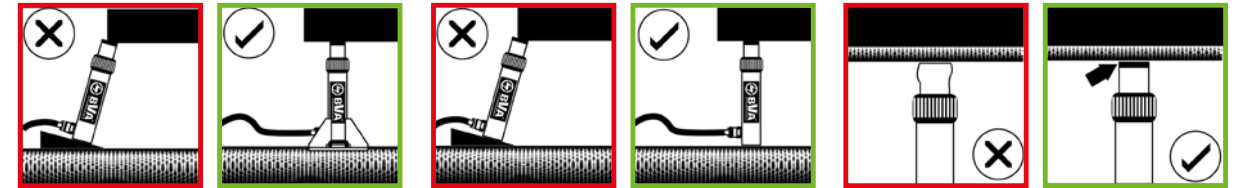
General



Do not override the factory setting of relief valves. Always use a gauge to check system pressure.

- » Read and understand all printed materials provided with and on this cylinder
- » Do not exceed rated capacities
- » Use only on hard level surface capable of sustaining the load
- » Do not connect actuators to pumps with higher pressure ratings
- » Always inspect hoses and connections for damage prior to use
- » Keep hands and feet away from work area
- » Lifting device only! Immediately after lifting, support the load with appropriate means
- » Use only manufacturer approved hydraulic fluid
- » No alterations shall be made to this cylinder
- » Failure to meet these markings may result in injury and/or property damage

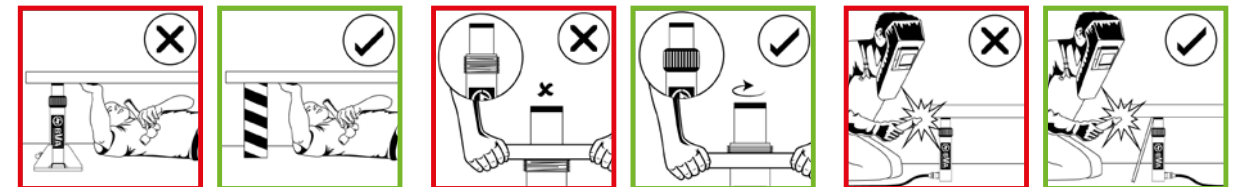
Cylinders



Provide a solid support for the entire cylinder base area. Use cylinder base attachment for more stability.

The entire cylinder saddle must be in contact with the load. Movement of the cylinder must be parallel with the movement of the load.

Do not use cylinder without saddle. This will cause plunger to "mushroom" Saddles distribute load evenly on the plunger.



As with jacks, never place any part of your body under the load. Load must be on cribbing before venturing under.

For using attachments, use the cylinder thread.

Keep hydraulic equipment away from open fire and temperatures above 150°F (65°C).

SAFETY INSTRUCTIONS

HYDRAULIC PUMP SAFETY INSTRUCTIONS

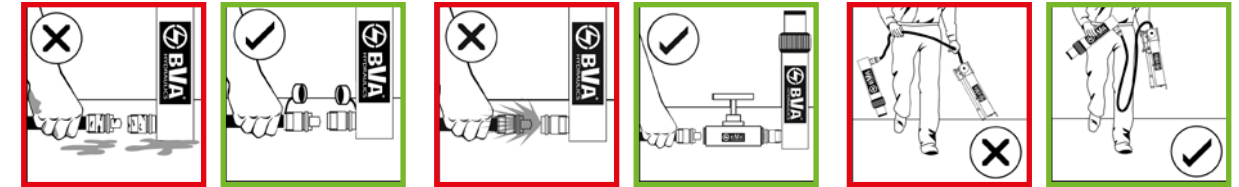
- » READ AND UNDERSTAND ALL WARNINGS, INSTRUCTIONS AND OWNER'S MANUAL INFORMATION BEFORE ATTEMPTING TO USE THIS EQUIPMENT.
- » Burst hazard exists if hose or connection pressure exceeds rated pressure.
- » Inspect hoses and connections for damage prior to use. Never attempt to grasp a leaking pressurized hose.
- » Inspect hoses and connections for damage prior to use. Never attempt to grasp a leaking pressurized hose.
- » Release the hydraulic pressure before disconnecting hoses or couplers, and before servicing the pump or accessory.
- » Immediately after lifting, support the load with appropriate means.
- » Wear protective clothing and eye protection when operating this equipment.
- » Ensure that the chosen application is stable to work on and around.
- » Do not subject the pump and its components to shock loads.
- » Do not connect to applications which can return more oil to the reservoir than the pump reservoir can hold.
- » Ensure that the rated pressure of all applications and fittings is equal to or greater than the rated pressure of this pump.
- » Keep hydraulic equipment away from flames and heat.
- » No alterations shall be made to this device.
- » Failure to meet these warnings may result in personal injury as well as property damage.

ELECTRIC PUMP SAFETY INSTRUCTIONS

TO AVOID ELECTROCUTION HAZARD:

- » Owner/Operator must read, understand and follow all printed material provided with this device before use. Make sure that the mains voltage corresponds to the information on the nameplate.
- » Connect ONLY to properly grounded electrical source. Connect to GFI outlet ONLY! The connecting plug of the pump must fit into the socket. The plug must not be changed in any way. Do not use adapter plugs. Unchanged plugs and matching sockets reduce the risk of electric shock. For use in dry locations.
- » Only use extension cables with a sufficient conductor cross-section that are approved for the application area.
- » Do not operate this device in an explosive atmosphere or in the presence of conductive liquids.

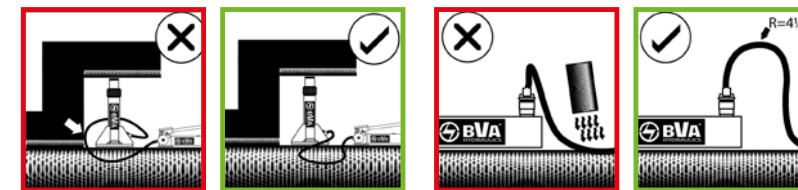
Hoses and Couplers



Clean both coupler parts before connecting. Use dust caps when coupler parts are not connected.

Detach cylinder only when fully retracted or use shut-off valves or safety valves to lock-in cylinder pressure.

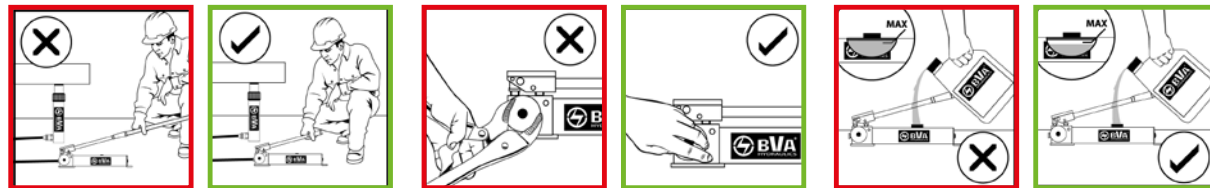
Don't lift hydraulic equipment by the hoses.



Keep hoses away from the area beneath loads.

Do not kink hoses. Bending radius should be at least 4 1/2". Do not drive over or drop heavy objects on the hoses.

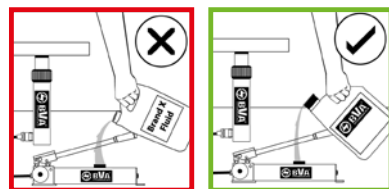
Pumps



Do not use handle extender. Hand pumps should be easy to operate when used correctly.

Close release valve finger tight. Using force will damage the valve.

Fill pump only to recommended level. Fill only when connected cylinder is fully retracted.



Use only genuine BVA hydraulic oil. The wrong fluid can destroy your seals and pump and will void the warranty.

JUST MOVE

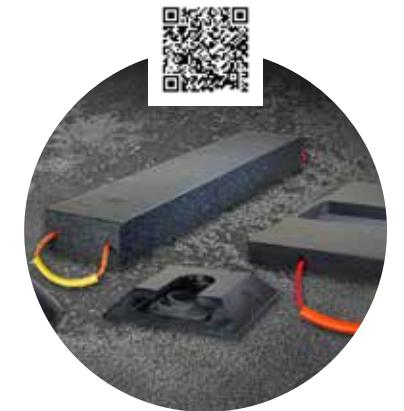


CATALOG OVERVIEW

Visit us on:   



**Lifting and
transport equipment**



**Support technology/
Ground protection**



Leveling castors



**Tugger trains for
intralogistics**



Lifting bags

Custom solution needed?

We solve uncommon lifting and transport problems by custom solutions - safe, fast and cost effective. Please do not hesitate to contact us!

Consulting, sales and service:

JUNG Hebe- und Transporttechnik GmbH

Biegelwiesenstraße 5-7
F +49 (0)7151 30393-0
info@jung-hebetechnik.de
Biegelwiesenstraße 5-7
D-71334 Waiblingen
jung-hebetechnik.de

Unser Logo und der Name JUNG sind in der EU, in den USA und in China unter folgenden Nummern geschützt:

EU: Logo Nr. 005878897, Name Nr. 005878806

USA: Logo Reg. Nr. 3,713,850, Name Reg. Nr. 3,697,526

China: Logo Nr. 14081450A, Name Nr. 14081449A

Technische Änderungen, die der Verbesserung von Funktion und Qualität dienen, behalten wir uns vor.

Made in Germany 09.2022 · Printed in Germany

Our logo and brand name „JUNG“ are registered as trademarks in the EU, US and China with register numbers:

EU: logo no. 005878897, name no. 005878806,

USA: logo reg. no. 3,713,850, name reg. no. 3,697,526

China: logo no. 14081450A, name no. 14081449A

We reserve the right to make technical modifications which serve to improve function and quality.

Made in Germany 09.2022 · Printed in Germany

JUNG
JUNG-HEBETECHNIK.DE