

LIFTING BAGS





JUNG on the move.

SOME STATIONS.

1972

FOUNDING

Karl-Heinz Jung founds the company JUNG in Kernen near Stuttgart.



1982

FIRST COMPANY BUILDING

The first own company building is built at the current location in Waiblingen.



1993

OWN SALES

JUNG separates from the former exclusive distribution partner and builds up its own sales department.



2001

NEW BUILDING

JUNG doubles the production area by building a new hall at the Waiblingen site.



2002

TUGGER TRAIN

JUNG expands its product range and now also produces trailers for in-house logistics.

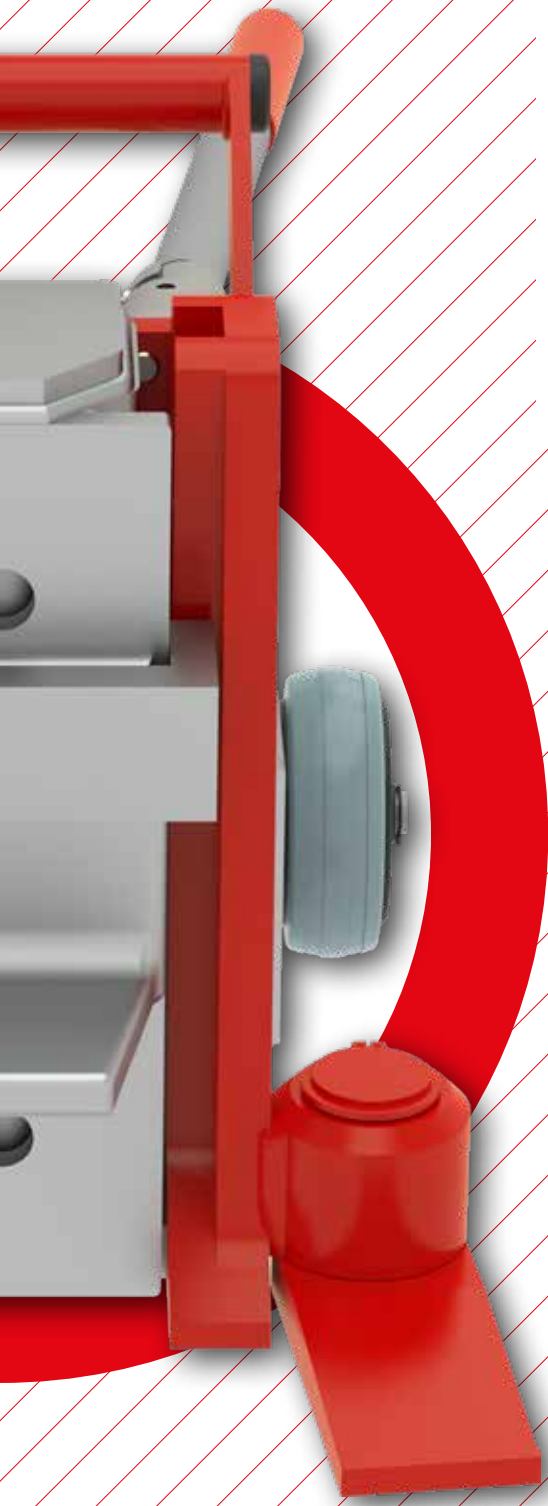


2003

FOOT MASTER®

JUNG starts selling FOOT MASTER® leveling castors.





In several stages, JUNG was expanded from a one-man operation to an international company. In the meantime JUNG has more than 50 employees. Many of them have been with the company for a long time, in some cases even completed their training at JUNG. Our employees have the goal of working together to achieve the best for our customers. Our ambition for 50 years is to make lifting and moving heavy loads easier, safer and more ergonomic for the user. According to our slogan: JUNG = Innovation, Karl-Heinz Jung and Thomas Würthele, together with the JUNG employees, have developed a large number of different devices to be able to offer the right product for every application.

2022

50 YEARS

The JUNG company celebrates its 50th anniversary.

2020



SUPPORT TECHNOLOGY

Expansion of the product range with support technology and surface protection

2017



GORR TRANSPORTECHNIK

JUNG acquires the company Gorr Transporttechnik GmbH in Eschwege.

2017



LIFTING BAGS

JUNG starts the distribution of lifting bags.

2008

INDUSTRIAL HYDRAULICS

JUNG is again expanding its product range to include industrial hydraulics.

2009

EXPANSION

JUNG further expands the production area by another hall at the Waiblingen site

2014



NEW PRODUCT LINE

JUNG presents the first electric-powered trolley JLA-e 15/30 G.

RESPONSIBILITY AWARENESS.

QUALITY

You can always trust in the quality and durability of our products. To manufacture highest quality we use most modern machines and assure a continuously high standard by a certified quality management system.

State of the art CNC technology, advanced welding robots and a certified quality management system (DIN EN ISO 9001) assure a consistently high level of product quality. Each hydraulic jack is subjected to a pre-shipment function test and receives a test badge displaying the next recommended maintenance check date. Each self-powered trolley is also subjected to a pre-shipment function test.

Following products are ANSI/ASME (USA) tested: JH G-plus, JH G-plus EX, JHS, JKB, series K, series M.

PROCESSES & ENVIRONMENT

As an ISO 9001 certified company we continuously improve our processes by involving our customers, employees and suppliers.

CUSTOMER

The satisfaction of our customers is in the center of our efforts. Due to our creativity and our expertise, we realize individual customer requests.

STAFF

The company's success is depending on our staff members. Therefore, we are continuously investing in training and development and support the experience and competence through long-term employment.





SOCIAL COMMITMENT

We are a part of Waiblingen and are glad to support regional social and charitable organizations.

ENVIRONMENT

We meet our ecological responsibilities in our daily work flow. We utilize our own solar power, obtain power from regenerative energy sources and have examined our ecological accountability under the Ecofit project.

LIFTING BAGS

Lifting bags

More than 50 years of experience in the production of elastomers allows PRONAL to develop a variety of solutions. Knowledge of handling synthetic materials has resulted in lifting cushions that are tough, safe and reliable. Proven in use in a wide variety of areas such as industry, civil defense, maintenance and construction. Thanks to the low installation height of only 25 mm, the cushions can be used additionally or alternatively, where there is no space for conventional lifting devices. As a real alternative to hydraulic lifting tools, they require little storage space when not in use.

Platform lifting bags

Thin and compact, PRONAL platform-lifting bags are the ideal product to lift heavy horizontal objects effortlessly. Its flat interlocking top and bottoms make it easily stackable in 3s and the most forgiving solution in compromised stabilization situations. A secure lifting column is created by the weight of the object and the surface of the lifting bag. Made of several layers of elastomer, they are vulcanized under vacuum in an autoclave.

Pneumatic lifting bags

PRONAL lifting bags can lift, push or wedge all types of loads (machines, vehicles, blocks...). Made out of an aramid fabric reinforcement coated with hot vulcanized elastomer, PRONAL cushions are resilient, reliable and meet the NF EN 13731 standards. Lightweight and easy to handle, their thin profile makes for rapid positioning under the load. These bags are used as an alternative solution in situations where traditional means are unsuitable.

Low pressure cylinder lifting bag

Complementary to high pressure lifting bags, PRONAL low pressure range allows the quick and high lifting of loads till 5 tons. PRONAL low pressure lifting bags are designed to lift moderate loads up to 1000 mm high, depending on the size of the lifting bag used. Due to its design, the cylinder lifting bag offers a significantly higher lifting height than other lifting bags. As pneumatic jacks, PRONAL CLC can be used for applications with moderate load requiring high lift, such as cars, trucks, farm machinery, and even small aircraft. Made out of neoprene coated, the lifting bag is ideal for many various rescue and recovery operations.



PLATFORM LIFTING BAGS

Load capacity up to 84.6 metric tons

Advantages in detail:

- Use:
 - Lifting height up to 510 mm
 - Operate in conjunction with conventional control systems
 - Max. stacking in threes
- Safety:
 - Extremely stable
 - Perfectly flat top & bottom
 - Safety factor of 3
- Handling:
 - Handling straps
 - Light weight: Easy to carry



JCPF 30/33

TYPE		■ JCPF 30/33	■ JCPF 38/42	■ JCPF 54/60
Dimensions (LxW)	mm	560 x 560	620 x 620	750 x 750
Weight	kg	11	12	18
Max lifting capacity	kg	31 400	38 400	56 300
Max stroke	mm	170	170	170
Air capacity	liter	32	42	68
Thickness empty	mm	25*	25*	25*
Working pressure	bar	10	10	10
Pressure test	bar	12	12	12
Bursting pressure	bar	32	32	32
Fitting of screw thread		1/4" - 18 NPTF	1/4" - 18 NPTF	1/4" - 18 NPTF
ORDER NO.		■ 31 031 170-CPF	■ 31 038 170-CPF	■ 31 056 170-CPF

TYPE		■ JCPF 68/74	■ JCPF 81/89
Dimensions (LxW)	mm	840 x 840	920 x 920
Weight	kg	22	26
Max lifting capacity	kg	70 600	84 600
Max stroke	mm	170	170
Air capacity	liter	90	112
Thickness empty	mm	25*	25*
Working pressure	bar	10	10
Pressure test	bar	12	12
Bursting pressure	bar	32	32
Fitting of screw thread		1/4" - 18 NPTF	1/4" - 18 NPTF
ORDER NO.		■ 31 070 170-CPF	■ 31 084 170-CPF

*Height can deviate up to 10%

PNEUMATIC LIFTING BAGS

Load capacity up to 65 tons

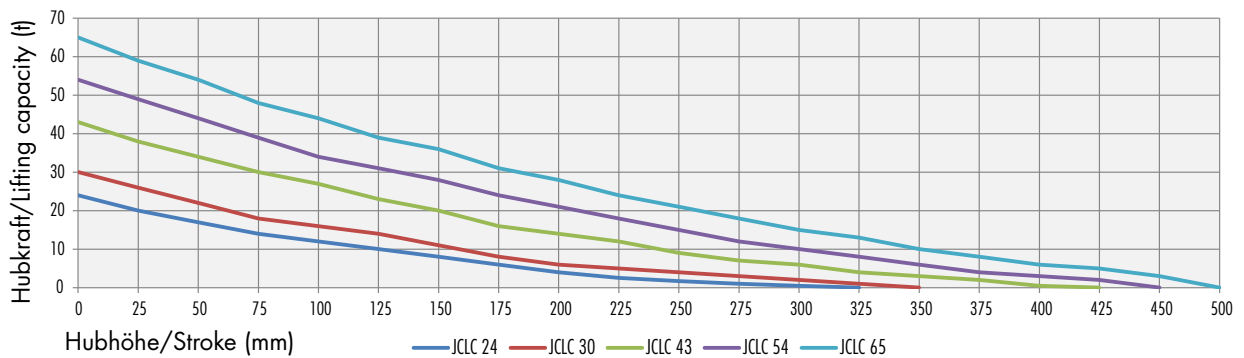
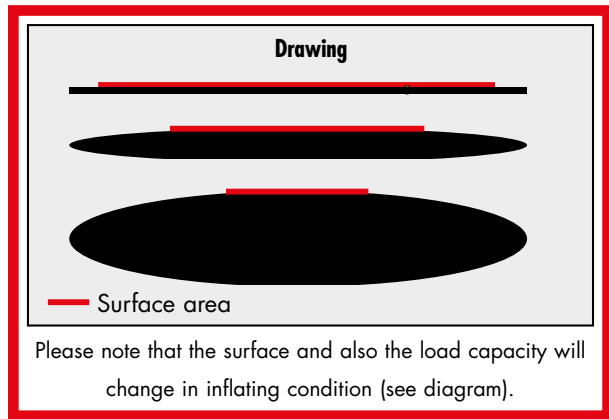
Advantages in detail:

- Use:
 - Interlocking ridge design to stack multiple bags
 - Fits to every coupling
 - Low insertion height: 2.5 cm
 - Precise adjustment of lifting height
 - Easy & quick to set up
- Safety:
 - Anti sliding foot print for more stability while lifting or stacking 2 bags
 - Progressive & smooth lifting
 - Compliant with NF EN 13731 standards
 - Margin of safety factor: >4
- Handling:
 - Bags equipped with handles
 - Light weight: Easy to carry

TYPE		JCLT 1	JCLT 3	JCLT 6
Dimensions (LxW)	mm	150 x 150	200 x 200	300 x 300
Weight	kg	0,6	1	3
Max lifting capacity	kg	1 000	3 000	6 000
Max stroke	mm	90	115	175
Air capacity	liter	5	12	41
Thickness empty*	mm	25	25	25
Working pressure	bar	8	8	8
Pressure test	bar	12	12	12
Fitting of screw thread		1/4" - 18 NPTF	1/4" - 18 NPTF	1/4" - 18 NPTF
BESTELL-NR.		■ 31 001 090-CLT	■ 31 003 115-CLT	■ 31 006 175-CLT

TYPE		JCLT 10	JCLT 14	JCLT 19
Dimensions (LxW)	mm	380 x 380	420 x 420	510 x 510
Weight	kg	4	5	8
Max lifting capacity	kg	10 000	14 000	19 000
Max stroke	mm	220	245	295
Air capacity	liter	84	113	203
Thickness empty*	mm	25	25	25
Working pressure	bar	8	8	8
Pressure test	bar	12	12	12
Fitting of screw thread		1/4" - 18 NPTF	1/4" - 18 NPTF	1/4" - 18 NPTF
BESTELL-NR.		■ 31 010 220-CLT	■ 31 014 245-CLT	■ 31 019 295-CLT

*Height can deviate up to 10%



TYPE		JCLT 24	JCLT 24 L	JCLT 30
Dimensions (LxW)	mm	560 x 560	1 000 x 320	620 x 620
Weight	kg	9	9	10
Max lifting capacity	kg	24 000	24 000	30 000
Max stroke	mm	320	215	345
Air capacity	liter	269	227	365
Thickness empty	mm	25*	25*	25*
Working pressure	bar	8	8	8
Pressure test	bar	12	12	12
Fitting of screw thread		1/4" - 18 NPTF	1/4" - 18 NPTF	1/4" - 18 NPTF
ORDER NO.		31 024 320-CLT	31 024 215-CLT	31 030 345-CLT

TYPE		JCLT 43	JCLT 54	JCLT 65
Dimensions (LxW)	mm	750 x 750	840 x 840	920 x 920
Weight	kg	15	19	22
Max lifting capacity	kg	43 000	54 000	65 000
Max stroke	mm	410	465	515
Air capacity	liter	646	908	1 190
Thickness empty	mm	25*	25*	25*
Working pressure	bar	8	8	8
Pressure test	bar	12	12	12
Fitting of screw thread		1/4" - 18 NPTF	1/4" - 18 NPTF	1/4" - 18 NPTF
ORDER NO.		31 043 410-CLT	31 054 465-CLT	31 065 515-CLT

*Height can deviate up to 10%

LOW PRESSURE LIFTING BAGS

Load capacity up to 5 metric tons

Advantages in detail:

■ Use:

- Easy positioning: tracking on the bag
- Low insertion height
- Possible stacking of the bags
- Easy & quick to set up

■ Safety:

- Anti sliding foot print for more stability while lifting or stacking 2 bags
- Progressive & smooth lifting

■ Handling:

- Bags equipped with handles
- Light weight: Easy to carry



JCBP 2



JCBP 2

TYPE		JCBP 1	JCBP 2	JCBP 3	JCBP 5
Dimensions (LxW)	mm	520 x 580	600 x 750	700 x 860	910 x 1120
Weight	kg	5	8	10,5	18,7
Max lifting capacity	kg	1 500	2 200	3 000	5 000
Max stroke	mm	400	500	600	760
Air capacity	liter	120	225	361	774
Thickness empty	mm	25	25	25	25
Working pressure	bar	0,5	0,5	0,5	0,5
Pressure test	bar	0,75	0,75	0,75	0,75
Fitting of screw thread	bar	3/4" - 18 NPTF	3/4" - 18 NPTF	3/4" - 18 NPTF	3/4" - 18 NPTF
ORDER NO.		31 001 400-CBP	31 002 500-CBP	31 003 600-CBP	31 005 760-CBP

LOW PRESSURE CYLINDER LIFTING BAGS

Load capacity up to 5 metric tons

Advantages in detail:

- Anwendung:
 - Lifting height up to 1 000 mm
 - Continuous lifting power

- Safety:
 - Non-bulging, flat surfaces
 - High burst pressure
 - Safety factor of 3

- Handling:
 - Handling straps
 - Light weight: Easy to carry



JCLC

TYPE		JCLC 3	JCLC 5	JCLC 7	JCLC 12
Dimensions	ø mm	610	760	910	1 220
Thickness empty	mm	50	50	70	100
Weight	kg	2,5	4	6,5	13
Max lifting capacity	kg	2 980	4 630	6 630	11 920
Max stroke	mm	430	590	610	1 000
Air capacity	liter	266	570	840	2 475
Working pressure	bar	1	1	1	1
Pressure test	bar	1	1	1	1
Bursting pressure	bar	3,5-4	3,5-4	3,5-4	3,5-4
Fitting of screw thread		3/4" - 18 NPTF	3/4" - 18 NPTF	3/4" - 18 NPTF	3/4" - 18 NPTF
ORDER NO.		■ 31 003 430-CLC	■ 31 004 590-CLC	■ 31 006 610-CLC	■ 31 012 999-CLC

INSPECTION NOTES

JUNG LIFTING BAGS

Low pressure lifting bags

- JCBP 0,5 bar
- JCLC 1,0 bar

High pressure lifting bags

- JCLT 8 bar
- JCPF 10 bar

Visual examination

For examination please inflate the lifting bag with 0.2 fold of the permissible operating pressure, clean with soap water and check for cracks, cuts, stiches, split-off or other kind of damages.

Examine the lifting bags:

- Air supply
- Cracks
- Surface damages (abrasive wear)
- Carrying strap (if available)
- Deformation
- Exposed core (fabric visible)
- Porosity (by heat or chemicals or other impact)
- Discoloration

Examine the operation device

- Air supply
- Damage of gauge
- Box damage

Examine the hose

- Air supply
- Check couplings/supply
- Kinks, cracks or cuts
- Porosity (by heat or chemicals or other impact)

Visual examination of filler

- Hoses: cracks, cuts, stiches, exposed core, kinks, bonding of coupling, nipple and socket
- Shift case: couplings, shift lever, ball valve handle, seal of safety valves, boxes

Test result

The lifting bag is safe to operate if and when

- the function of all parts correspond to the operating manual,
- the lifting bags show no cracks, cuts, stiches, split-off, porosity and no leakage
- the popping pressure is within allowable range

Inspection specification/due diligence

Visual examination and functional test by the operator:

Visual examination and functional test by technical expert:

(When the lifting bags are used by fire service)

Visual examination and functional test and pressure test:

Replacement of lifting bags:

after each operation

annually by expert

following DGVU-G305-002

every 5 years by producer

(OEM)

after 15 years

Functional test

Lifting bags with allowable operating pressure less than 1,0 bar (14,5 psi)

For functional test please inflate the lifting bags to 0.5 fold of allowable operating pressure and check for leaks. The lifting bag is leaky if the pressure decrease more than 10% within one hour.

Lifting bags with allowable operating pressure more than 1 bar (14,5 psi)

The functional test should be done with water only. The testing pressure to be applied should be the 1.3 times of the allowable operating pressure. The lifting bag is safe to operate if within 3 minutes, maximum within 5 minutes, neither leakage nor atypical deformation appears. Please dry the lifting bag after testing at ambient temperature.

ACCESSORIES



DEADMAN CONTROLLERS FOR JCPF

TYPE	67761	67759	67763
Input	1	1	1
Output	1	1	2
Working pressure	bar 10	10	10
Fitting of screw thread	1/4" - 18 NPTF	1/4" - 18 NPTF	1/4" - 18 NPTF
ORDER NO.	31 OW1 014-CPF	31 OD1 014-CPF	31 OW2 014-CPF

TYPE	67757	67752	67754
Input	1	1	1
Output	2	2	3
Working pressure	bar 10	10	10
Fitting of screw thread	1/4" - 18 NPTF	1/4" - 18 NPTF	1/4" - 18 NPTF
ORDER NO.	31 OD2 014-CPF	31 OS2 014-CPF	31 OS3 014-CPF

ACCESSORIES

DEADMAN CONTROLLERS FOR JCLT

TYPE	67192	66907	67193
Input	1	1	1
Output	1	1	2
Working pressure	8 bar	8	8
Fitting of screw thread	1/4" - 18 NPTF	1/4" - 18 NPTF	1/4" - 18 NPTF
ORDER NO.	31 OW1 014-CLT	31 OD1 014-CLT	31 OW2 014-CLT

TYPE	66906	66908	67755
Input	1	1	1
Output	2	2	3
Working pressure	8 bar	8	8
Fitting of screw thread	1/4" - 18 NPTF	1/4" - 18 NPTF	1/4" - 18 NPTF
ORDER NO.	31 OD2 014-CLT	31 OS2 014-CLT	31 OS3 014-CLT

DEADMAN CONTROLLERS FOR JCLC

TYPE	67762	67760	67764
Input	1	1	1
Output	1	1	2
Working pressure	1 bar	1	1
Fitting of screw thread	1/4" - 18 NPTF	1/4" - 18 NPTF	1/4" - 18 NPTF
ORDER NO.	31 OW1 014-CLC	31 OD1 014-CLC	31 OW2 014-CLC

TYPE	67758	67753	67756
Input	1	1	1
Output	2	2	3
Working pressure	1 bar	1	1
Fitting of screw thread	1/4" - 18 NPTF	1/4" - 18 NPTF	1/4" - 18 NPTF
ORDER NO.	31 OD2 014-CLC	31 OS2 014-CLC	31 OS3 014-CLC



INFLATION HOSES

TYPE	5 METER	10 METER
Color	red	red
ORDER NO.	31 914 014-05	31 914 014-10

CATALOG OVERVIEW

Visit us on:



Lifting and transport equipment



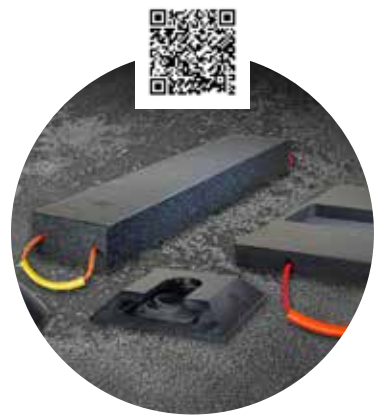
Leveling castors



**Industrial hydraulics
BVA**



Tigger trains for intralogistics



**Support technology/
Ground protection**

Custom solution needed?

We solve uncommon lifting and transport problems by custom solutions - safe, fast and cost effective. Please do not hesitate to contact us!

Consulting, sales and service:

JUNG Hebe- und Transporttechnik GmbH

F +49 (0)7151 30393-0
info@jung-hebetechnik.de
Biegelwiesenstraße 5-7
D-71334 Waiblingen
jung-hebetechnik.de

Unser Logo und der Name JUNG sind in der EU, in den USA und in China unter folgenden Nummern geschützt:

EU: Logo Nr. 005878897, Name Nr. 005878806

USA: Logo Reg. Nr. 3,713,850, Name Reg. Nr. 3,697,526

China: Logo Nr. 14081450A, Name Nr. 14081449A

Technische Änderungen, die der Verbesserung von Funktion und Qualität dienen, behalten wir uns vor.

Made in Germany 10.2022 · Printed in Germany

Our logo and brand name „JUNG“ are registered as trademarks in the EU, US and China with register numbers:

EU: logo no. 005878897, name no. 005878806,

USA: logo reg. no. 3,713,850, name reg. no. 3,697,526

China: logo no. 14081450A, name no. 14081449A

We reserve the right to make technical modifications which serve to improve function and quality.

Made in Germany 10.2022 · Printed in Germany

JUNG
JUNG-HEBETECHNIK.DE