

SUPPORT TECHNOLOGY/ GROUND PROTECTION





JUNG on the move.

SOME STATIONS.

1972

FOUNDING

Karl-Heinz Jung founds the company JUNG in Kernen near Stuttgart.



1982

FIRST COMPANY BUILDING

The first own company building is built at the current location in Waiblingen.



1993

OWN SALES

JUNG separates from the former exclusive distribution partner and builds up its own sales department.



2001

NEW BUILDING

JUNG doubles the production area by building a new hall at the Waiblingen site.



2002

TUGGER TRAIN

JUNG expands its product range and now also produces trailers for in-house logistics.

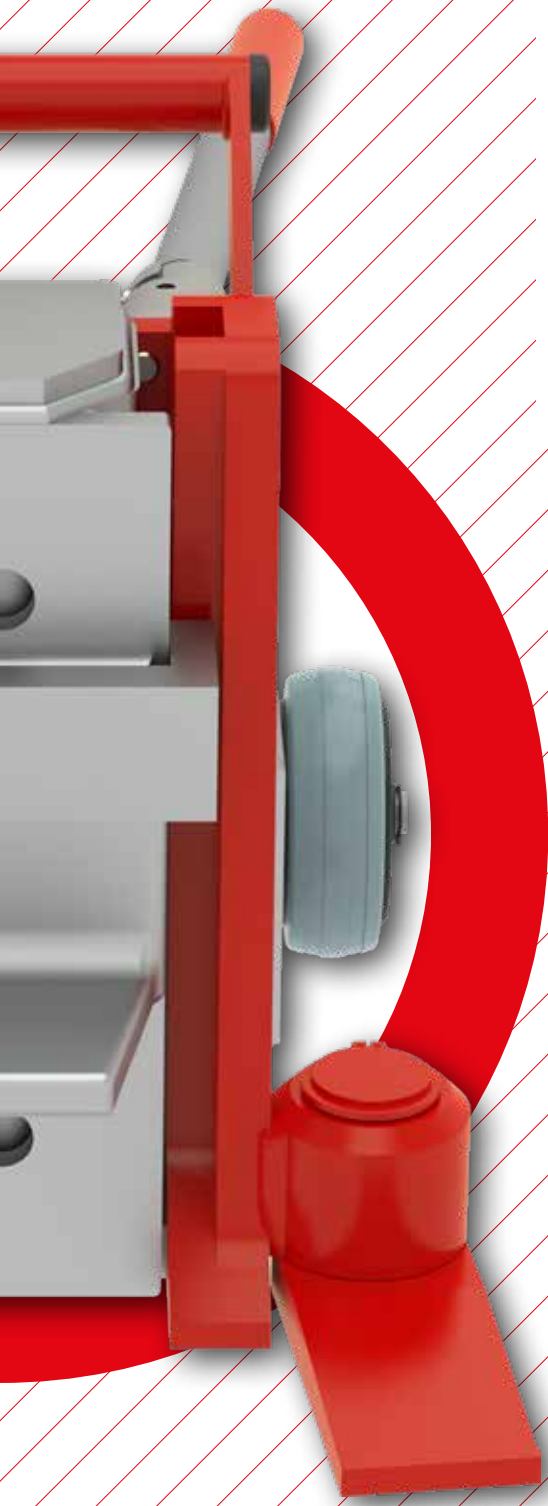


2003

FOOT MASTER®

JUNG starts selling FOOT MASTER® leveling castors.





In several stages, JUNG was expanded from a one-man operation to an international company. In the meantime JUNG has more than 50 employees. Many of them have been with the company for a long time, in some cases even completed their training at JUNG. Our employees have the goal of working together to achieve the best for our customers. Our ambition for 50 years is to make lifting and moving heavy loads easier, safer and more ergonomic for the user. According to our slogan: JUNG = Innovation, Karl-Heinz Jung and Thomas Würthele, together with the JUNG employees, have developed a large number of different devices to be able to offer the right product for every application.

2022

50 YEARS

The JUNG company celebrates its 50th anniversary.

2020



SUPPORT TECHNOLOGY

Expansion of the product range with support technology and surface protection

2017



GORR TRANSPORTECHNIK

JUNG acquires the company Gorr Transporttechnik GmbH in Eschwege.

2017



LIFTING BAGS

JUNG starts the distribution of lifting bags.

2008

INDUSTRIAL HYDRAULICS

JUNG is again expanding its product range to include industrial hydraulics.

2009

EXPANSION

JUNG further expands the production area by another hall at the Waiblingen site

2014



NEW PRODUCT LINE

JUNG presents the first electric-powered trolley JLA-e 15/30 G.

RESPONSIBILITY AWARENESS.

QUALITY

You can always trust in the quality and durability of our products. To manufacture highest quality we use most modern machines and assure a continuously high standard by a certified quality management system.

State of the art CNC technology, advanced welding robots and a certified quality management system (DIN EN ISO 9001) assure a consistently high level of product quality. Each hydraulic jack is subjected to a pre-shipment function test and receives a test badge displaying the next recommended maintenance check date. Each self-powered trolley is also subjected to a pre-shipment function test.

Following products are ANSI/ASME (USA) tested: JH G-plus, JH G-plus EX, JHS, JKB, series K, series M

PROCESSES & ENVIRONMENT

As an ISO 9001 certified company we continuously improve our processes by involving our customers, employees and suppliers.

CUSTOMER

The satisfaction of our customers is in the center of our efforts. Due to our creativity and our expertise, we realize individual customer requests.

STAFF

The company's success is depending on our staff members. Therefore, we are continuously investing in training and development and support the experience and competence through long-term employment.





SOCIAL COMMITMENT

We are a part of Waiblingen and are glad to support regional social and charitable organizations.

ENVIRONMENT

We meet our ecological responsibilities in our daily work flow. We utilize our own solar power, obtain power from regenerative energy sources and have examined our ecological accountability under the Ecofit project.

SUPPORT PADS - BLACK

Load capacity up to 70 metric tons

i DESCRIPTION

- Easy installation due to low weight
- Optimal stability
- Highly loadable and extremely stable (over 60 tonnes on solid underground)
- Protect every underground
- Long durability – shatterproof and wear-resistant
- Easy transport in stackable boxes
- Less stressed machines
- Characteristics of LuxTek Performance support pads: plastic PE-HD, produced in press procedure, made in Germany, high quality according to DIN and ISO, plasticizers-free, high temperature resistance (-80 °C to +80 °C), weatherproof, heat and frost-resistant, UV-ray resistant

TYPE		JKSS3330	JKSS3340	JKSS4430
Maximal load capacity	kg	7 000	8 000	8 000
Dimensions L x W x H	mm	300 x 300 x 30	300 x 300 x 40	400 x 400 x 30
Execution		Performance	Performance	Performance
Shape		square	square	square
Weight	kg	2,6	3,5	4,6
ORDER NO.		39 030 030-30 KSS	39 030 030-40 KSS	39 040 040-30 KSS

TYPE		JKSS4440	JKSS4450	JKSS4460
Maximal load capacity	kg	10 000	12 000	18 000
Dimensions L x W x H	mm	400 x 400 x 40	400 x 400 x 50	400 x 400 x 60
Execution		Performance	Performance	Performance
Shape		square	square	square
Weight	kg	6,1	7,7	9,1
ORDER NO.		39 040 040-40 KSS	39 040 040-50 KSS	39 040 040-60 KSS

TYPE		JKSS5540	JKSS5550	JKSS5560
Maximal load capacity	kg	15 000	18 000	20 000
Dimensions L x W x H	mm	500 x 500 x 40	500 x 500 x 50	500 x 500 x 60
Execution		Performance	Performance	Performance
Shape		square	square	square
Weight	kg	9,6	12	14,5
ORDER NO.		39 050 050-40 KSS	39 050 050-50 KSS	39 050 050-60 KSS



TYPE		JKSS6640	JKSS6650	JKSS6660
Maximal load capacity	kg	20 000	23 000	25 000
Dimensions L x W x H	mm	600 x 600 x 40	600 x 600 x 50	600 x 600 x 60
Execution		Performance	Performance	Performance
Shape		square	square	square
Weight	kg	14	17,5	20,6
ORDER NO.		39 060 060-40 KSS	39 060 060-50 KSS	39 060 060-60 KSS

TYPE		JKSS8840	JKSS8850	JKSS8860
Maximal load capacity	kg	25 000	30 000	35 000
Dimensions L x W x H	mm	800 x 800 x 40	800 x 800 x 50	800 x 800 x 60
Execution		Performance	Performance	Performance
Shape		square	square	square
Weight	kg	24,6	31	37
ORDER NO.		39 080 080-40 KSS	39 080 080-50 KSS	39 080 080-60 KSS

TYPE		JKSS101040	JKSS101050	JKSS101060
Maximal load capacity	kg	30 000	40 000	50 000
Dimensions L x W x H	mm	1 000 x 1 000 x 40	1 000 x 1 000 x 50	1 000 x 1 000 x 60
Execution		Performance	Performance	Performance
Shape		square	square	square
Weight	kg	38,4	48	58
ORDER NO.		39 100 100-40 KSS	39 100 100-50 KSS	39 100 100-60 KSS

TYPE		JKSS101080	JKSS121260
Maximal load capacity	kg	70 000	60 000
Dimensions L x W x H	mm	1 000 x 1 000 x 80	1 200 x 1 200 x 60
Execution		Performance	Performance
Shape		square	square
Weight	kg	76,8	82,4
ORDER NO.		39 100 100-80 KSS	39 120 120-60 KSS

SUPPORT PADS - COLOURED

Load capacity up to 70 metric tons

i DESCRIPTION

- Easy installation due to low weight
- Optimal stability
- Highly loadable and extremely stable (over 60 tonnes on solid underground)
- Protect every underground
- Long durability – shatterproof and wear-resistant
- Easy transport in stackable boxes
- Less stressed machines
- Characteristics of LuxTek Performance support pads: plastic PE-HD, produced in press procedure, made in Germany, high quality according to DIN and ISO, plasticizers-free, high temperature resistance (-80 °C to +80 °C), weatherproof, heat and frost-resistant, UV-ray resistant

TYPE		JKS3330	JKS3340	JKS4430
Maximal load capacity	kg	7 000	8 000	8 000
Dimensions L x W x H	mm	300 x 300 x 30	300 x 300 x 40	400 x 400 x 30
Execution		Performance	Performance	Performance
Shape		square	square	square
Weight	kg	2,6	3,5	4,6
ORDER NO.		39 030 030-30 KS	39 030 030-40 KS	39 040 040-30 KS

TYPE		JKS4440	JKS4450	JKS4460
Maximal load capacity	kg	10 000	12 000	18 000
Dimensions L x W x H	mm	400 x 400 x 40	400 x 400 x 50	400 x 400 x 60
Execution		Performance	Performance	Performance
Shape		square	square	square
Weight	kg	6,1	7,7	9,1
ORDER NO.		39 040 040-40 KS	39 040 040-50 KS	39 040 040-60 KS

TYPE		JKS5540	JKS5550	JKS5560
Maximal load capacity	kg	15 000	18 000	20 000
Dimensions L x W x H	mm	500 x 500 x 40	500 x 500 x 50	500 x 500 x 60
Execution		Performance	Performance	Performance
Shape		square	square	square
Weight	kg	9,6	12	14,5
ORDER NO.		39 050 050-40 KS	39 050 050-50 KS	39 050 050-60 KS



TYPE		JKS6640	JKS6650	JKS6660
Maximal load capacity	kg	20 000	23 000	25 000
Dimensions L x W x H	mm	600 x 600 x 40	600 x 600 x 50	600 x 600 x 60
Execution		Performance	Performance	Performance
Shape		square	square	square
Weight	kg	14	17,5	20,6
ORDER NO.		■ 39 060 060-40 KS	■ 39 060 060-50 KS	■ 39 060 060-60 KS

TYPE		JKS8840	JKS8850	JKS8860
Maximal load capacity	kg	25 000	30 000	35 000
Dimensions L x W x H	mm	800 x 800 x 40	800 x 800 x 50	800 x 800 x 60
Execution		Performance	Performance	Performance
Shape		square	square	square
Weight	kg	24,6	31	37
ORDER NO.		■ 39 080 080-40 KS	■ 39 080 080-50 KS	■ 39 080 080-60 KS

TYPE		JKS101040	JKS101050	JKS101060
Maximal load capacity	kg	30 000	40 000	50 000
Dimensions L x W x H	mm	1 000 x 1 000 x 40	1 000 x 1 000 x 50	1 000 x 1 000 x 60
Execution		Performance	Performance	Performance
Shape		square	square	square
Weight	kg	38,4	48	58
ORDER NO.		■ 39 100 100-40 KS	■ 39 100 100-50 KS	■ 39 100 100-60 KS

TYPE		JKS101080	JKS121260
Maximal load capacity	kg	70 000	60 000
Dimensions L x W x H	mm	1 000 x 1 000 x 80	1 200 x 1 200 x 60
Execution		Performance	Performance
Shape		square	square
Weight	kg	76,8	82,4
ORDER NO.		■ 39 100 100-80 KS	■ 39 120 120-60 KS

HEAVY-DUTY WEDGES

Load capacity up to 50 metric tons

i DESCRIPTION

- Easy installation due to low weight
- Optimal stability
- Highly loadable and extremely stable
- Protect tires, chains and rims
- Long durability – shatterproof and wear-resistant
- Easy transport in stackable boxes
- Less stressed machines
- Characteristics of LuxTek heavy-duty wedges: plastic PE-HD, produced in press procedure, made in Germany, high quality according to DIN and ISO, plasticizers-free, high temperature resistance (-80 °C to +80 °C), weatherproof, heat and frost-resistant, UV-ray resistant



TYPE		JSLK102530	JSLK102540	JSLK102550
Maximal load capacity	kg	50 000	50 000	5 000
Dimensions L x W x H	mm	1 000 x 250 x 30	1 000 x 250 x 40	1 000 x 250 x 50
Execution		Performance	Performance	Performance
Shape		square	square	square
Weight	kg	3,6	4,8	6
ORDER NO.		■ 39 100 025-30 SLK	■ 39 100 025-40 SLK	■ 39 100 025-50 SLK

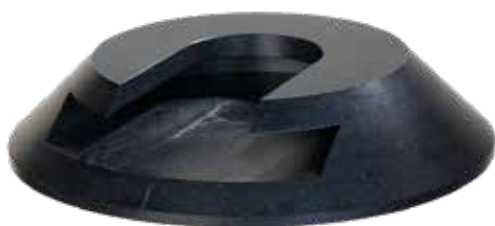
TYPE		JSLK103070	JSLK103090	JSLK1030100
Maximal load capacity	kg	50 000	50 000	5 000
Dimensions L x W x H	mm	1 000 x 300 x 70	1 000 x 300 x 90	1 000 x 300 x 100
Execution		Performance	Performance	Performance
Shape		square	square	square
Weight	kg	8,4	10,8	12
ORDER NO.		■ 39 100 030-70 SLK	■ 39 100 030-90 SLK	■ 39 100 030-100 SLK

SLIDE PADS

Load capacity up to 25 metric tons

i DESCRIPTION

- Easy installation due to low weight
- Safe grip
- Highly loadable and extremely stable
- Long durability – shatterproof and wear-resistant
- Less stressed machines
- Optimal load distribution
- Characteristics of LuxTek Performance slide pads: plastic PE-HD, produced in press procedure, made in Germany, high quality according to DIN and ISO, plasticizers-free, high temperature resistance (-80 °C to +80 °C), weatherproof, heat and frost-resistant, UV-ray resistant



TYPE		JSPR308	JSPR408
Maximal load capacity	kg	8 000	15 000
Dimensions Ø x H	mm	300 x 80	400 x 80
Execution		Performance	Performance
Shape		round	round
Weight	kg	2,6	5

ORDER NO.

■ 39 030 080-SPR

■ 39 040 080-SPR

TYPE		JSPR508	JSPR608
Maximal load capacity	kg	20 000	25 000
Dimensions Ø x H	mm	500 x 80	600 x 80
Execution		Performance	Performance
Shape		round	round
Weight	kg	9	14,9

ORDER NO.

■ 39 050 080-SPR

■ 39 060 080-SPR

CONTAINERPLATES

Load capacity up to 25 metric tons

i DESCRIPTION

- The support plates with milling are for roll-off containers. Milling: 25 mm deep, edge: 25 mm
- The plates ensure sufficient under-ventilation of the container and perfect height compensation in uneven conditions
- Easy installation due to low weight
- Optimal stability
- Highly loadable and extremely stable
- Long durability – shatterproof and wear-resistant
- Easy transport in stackable boxes
- Less stressed machines
- Characteristics of LuxTek containerplates: plastic PE-HD, produced in press procedure, made in Germany, high quality according to DIN and ISO, plasticizers-free, high temperature resistance (-80 °C to +80 °C), weatherproof, heat and frost-resistant, UV-ray resistant



TYPE		JKSS4440RC	JKSS4450RC	JKSS4460RC
Maximal load capacity	kg	10 000	12 000	18 000
Dimensions L x W x H	mm	400 x 400 x 40	400 x 400 x 50	400 x 400 x 60
Execution		Containerplates	Containerplates	Containerplates
Shape		square	square	square
Weight	kg	6,1	7,7	9,1
ORDER NO.		■ 39 040 040-40 KSS-RC	■ 39 040 040-50 KSS-RC	■ 39 040 040-60 KSS-RC



TYPE		JKSS5540RC	JKSS5550RC	JKSS5560RC
Maximal load capacity	kg	15 000	18 000	20 000
Dimensions L x W x H	mm	500 x 500 x 40	500 x 500 x 50	500 x 500 x 60
Execution		Containerplates	Containerplates	Containerplates
Shape		square	square	square
Weight	kg	9,6	12	14,5
ORDER NO.		39 050 050-40 KSS-RC	39 050 050-50 KSS-RC	39 050 050-60 KSS-RC

TYPE		JKSS6640RC	JKSS6650RC	JKSS6660RC
Maximal load capacity	kg	20 000	23 000	25 000
Dimensions L x W x H	mm	600 x 600 x 40	600 x 600 x 50	600 x 600 x 60
Execution		Containerplates	Containerplates	Containerplates
Shape		square	square	square
Weight	kg	14	17,5	20,6
ORDER NO.		39 060 060-40 KSS-RC	39 060 060-50 KSS-RC	39 060 060-60 KSS-RC

OUTRIGGER PAD

Load capacity up to 70 metric tons

i DESCRIPTION

- Easy installation due to its round shape
- Optimal stability
- Highly loadable and extremely stable
- Protect every underground
- Long durability – shatterproof and wear-resistant
- Easy transport in stackable boxes
- Less stressed machines
- Characteristics of LuxTek outrigger pads: plastic PE-HD, produced in press procedure, made in Germany, high quality according to DIN and ISO, plasticizers-free, high temperature resistance (-80 °C to +80 °C), weatherproof, heat and frost-resistant, UV-ray resistant



TYPE		JRK594	JRK994	JRK695
Maximal load capacity	kg	20 000	25 000	25 000
Dimensions Ø x H	mm	590 x 40	990 x 40	690 x 50
Execution		Rolling	Rolling	Rolling
Shape		round	round	round
Weight	kg	10,8	30,2	18,5
ORDER NO.		39 059 059-40 RK	39 099 099-40 RK	39 069 069-50 RK



TYPE		JRK995	JRK696	JRK996
Maximal load capacity	kg	30 000	25 000	35 000
Dimensions Ø x H	mm	990 x 50	690 x 60	990 x 60
Execution		Rolling	Rolling	Rolling
Shape		round	round	round
Weight	kg	37,7	22,2	45,2
ORDER NO.		■ 39 099 099-50 RK	■ 39 069 069-60 RK	■ 39 099 099-60 RK

TYPE		JRK1196	JRK1198
Maximal load capacity	kg	50 000	70 000
Dimensions Ø x H	mm	1 190 x 60	1 190 x 80
Execution		Rolling	Rolling
Shape		round	round
Weight	kg	65,2	86,9
ORDER NO.		■ 39 119 119-60 RK	■ 39 119 119-80 RK

CRANE SUPPORT BEAMS/ SUPPORTING BLOCKS

i DESCRIPTION

- Easy installation due to low weight
- Optimal stability
- Highly loadable and extremely stable
- Protect every underground
- Long durability – shatterproof and wear-resistant
- Easy transport in stackable boxes
- Less stressed machines
- **Crane support beams are available in 3 versions:**
Version **Basic** - Standard
Version **Eco** - weight-reduced
Version **Anti-Slip** - weight-reduced & anti-slip coating
- Characteristics of LuxTek crane support beams/supporting blocks: plastic PE-HD, produced in press procedure, made in Germany, high quality according to DIN and ISO, plasticizers-free, high temperature resistance (-80 °C to +80 °C), weatherproof, heat and frost-resistant, UV-ray resistant



SUPPORTING BLOCKS

TYPE	■ JSB35015050	■ JSB350150100
Maximal load capacity	kg 25 000	25 000
Dimensions L x W x H	mm 350 x 150 x 50	350 x 150 x 100
Execution	Lift	Lift
Shape	round	round
Weight	kg 2,6	5,2
ORDER NO.	■ 39 035 015-50 SB	■ 39 035 015-100 SB

**CRANE SUPPORT BEAM**

TYPE		JKR10280	JKR102100
Maximal load capacity*	kg	100 000	100 000
Dimensions L x W x H	mm	1 000 x 200 x 80	1 000 x 200 x 100
Execution		Basic	Basic
Shape		square	square
Weight	kg	16	20
ORDER NO.		39 100 020-80 KB	39 100 020-100 KB

TYPE		JKE10280	JKE102100
Maximal load capacity*	kg	70 000	70 000
Dimensions L x W x H	mm	1 000 x 200 x 80	1 000 x 200 x 100
Execution		Eco	Eco
Shape		square	square
Weight	kg	12	15
ORDER NO.		39 100 020-80 KE	39 100 020-100 KE

TYPE		JKA10280	JKA102100
Maximal load capacity*	kg	70 000	70 000
Dimensions L x W x H	mm	1 000 x 200 x 80	1 000 x 200 x 100
Execution		Anti-Slip	Anti-Slip
Shape		square	square
Weight	kg	12	15
ORDER NO.		39 100 020-80 KA	39 100 020-100 KA

*under optimal conditions (flat, stable concrete floor)

LOAD SECURING

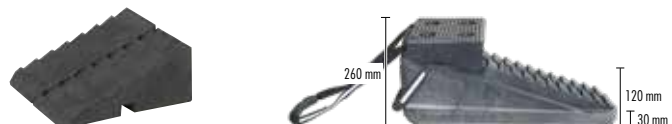
Cribbing blocks

i DESCRIPTION

- Rapid stair - Supporting wedge and saddle to secure and stabilisation of heavy loads
- Additional pads and wedges to structure supports
- Strong: 60 metric tons load capacity
- Safe: shatterproof and resistant



TYPE		JUB 40	JUB 80	JUB 600
Maximal load capacity	kg	20 000	20 000	60 000
Dimensions L x W x H	mm	200 x 200 x 40	200 x 200 x 80	600 x 200 x 80
Weight	kg	1,3	2,5	6,9
ORDER NO.		38 020 040-60	38 020 080-60	38 600 200-60



TYPE		JUB K	JUB T SET
Maximal load capacity	kg	20 000	10 000
Dimensions L x W x H	mm	200 x 200 x 90	625 x 200 x 260
Weight	kg	1,5	8,5
ORDER NO.		38 020 081-60	38 060 020-60

LOAD SECURING

Jack stands

DESCRIPTION

- Delivery includes 2 identical jack stands each.
- Jack stands are designed to safely support level, rated capacity loads, typically vehicles, for extended periods.
- Cast iron construction, ductile iron ratchet bars to ensure safety, stability.
- Each comes with a ratchet/collar lock, which prevents inadvertent loss of ratchet bar.



TYPE		■ JUSB 3 SET	■ JUSB 6 SET	■ JUSB 12 SET
Maximal load capacity	kg	2 x 3 000	2 x 6 000	2 x 12 000
Dimensions L x W x H	mm	194 x 175 x 289	267 x 226 x 406	314 x 317 x 499
Maximal stroke	mm	136	189	260
Weight	kg	6	12	19
ORDER NO.		■ 38 003 286-USB	■ 38 006 406-USB	■ 38 012 499-USB

ACCESSORIES FOR SUPPORT TECHNOLOGY

i DESCRIPTION

- Ideal to store support pads
- Hot-dip galvanized/galvanized
- Made of flat steel/made of round steel
- Installation directly to the vehicle possible
- Long duration, even during low temperature, wetness, snow and salt



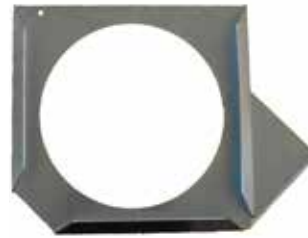
BOX FOR ONE SUPPORT PAD

TYPE		JSPB300	JSPB600	JSPB800
Execution		galvanized	galvanized	galvanized
Dimensions L x W x H	mm	300 x 300 x 40-60	600 x 600 x 40-60	800 x 800 x 40-60
Shape		square	square	square
Weight	kg	4,5	9	12,2
ORDER NO.		■ 39 030 030-40 SPB	■ 39 060 060-40 SPB	■ 39 080 080-40 SPB



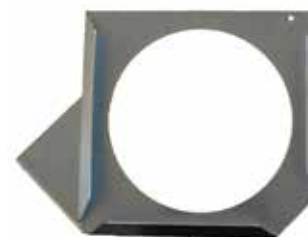
BOX FOR TWO SUPPORT PADS

TYPE		JDPB300	JDPB600	JDPB800
Execution		galvanized	galvanized	galvanized
Dimensions L x W x H	mm	300 x 300 x 40-60	600 x 600 x 40-60	800 x 800 x 40-60
Shape		square	square	square
Weight	kg	4,5	9	12,2
ORDER NO.		■ 39 030 030-40 DPB	■ 39 060 060-40 DPB	■ 39 080 080-40 DPB

**SLIDE PADS HOLDER FOR LEFT**

TYPE		JSPH300-L	JSPH400-L
Execution		galvanized	galvanized
Shape		square	square
Weight	kg	3,7	4,5
ORDER NO.		■ 39 000 300-SPHL	■ 39 000 400-SPHL

TYPE		JSPH500-L	JSPH600-L
Execution		galvanisch verzink	galvanisch verzink
Shape		square	square
Weight	kg	5,5	9,2
ORDER NO.		■ 39 000 500-SPHL	■ 39 000 600-SPHL

**SLIDE PADS HOLDER FOR RIGHT**

TYPE		JSPH300-R	JSPH400-R
Execution		galvanized	galvanized
Shape		square	square
Weight	kg	3,7	4,5
ORDER NO.		■ 39 000 300-SPHR	■ 39 000 400-SPHR

TYPE		JSPH500-R	JSPH600-R
Execution		galvanized	galvanized
Shape		square	square
Weight	kg	5,5	9,2
ORDER NO.		■ 39 000 500-SPHR	■ 39 000 600-SPHR

ROAD PLATES

Load capacity up to 120 metric tons

i DESCRIPTION

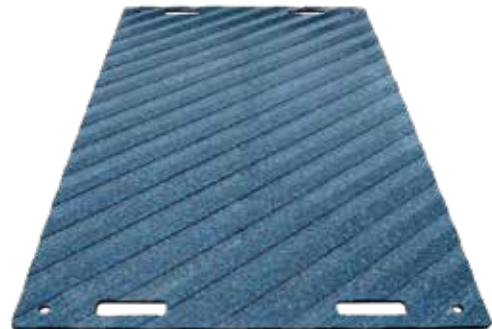
- Easy installation due to low weight
- Safe driving and optimal stability on unpaved and soft underground
- Highly loadable and extremely stable (with solid underground over 120 tons)
- Long durability – shatterproof and wear-resistant
- Easy transport in stackable boxes
- Less stressed machines
- Low fuel consumption
- Resistant to liquids
- Protect any kind of underground
- Characteristics of LuxTek road plates: plastic PE-HD, produced in press procedure, made in Germany, high quality according to DIN and ISO, plasticizers-free, high temperature resistance (-80 °C to +80 °C), weatherproof, heat and frost-resistant, UV-ray resistant
- Easy cleaning



TYPE		JFP20515	JFP201015	JFP241215
Load capacity on unpaved and wet underground	kg	5 000	12 000	12 000
Load capacity on unpaved and dry underground	kg	10 000	20 000	25 000
Load capacity on reinforced underground	kg	80 000	80 000	80 000
Dimensions L x W x H	mm	1 985 x 430 x 15	2 000 x 1 000 x 15	2 400 x 1 200 x 15
Execution		Performance	Performance	Performance
Weight	kg	14	28	41
ORDER NO.		39 198 043-15 FP	39 200 100-15 FP	39 240 120-15 FP



TYPE		JFP301015	JFP20520	JFP201020
Load capacity on unpaved and wet underground	kg	12 000	10 000	20 000
Load capacity on unpaved and dry underground	kg	25 000	20 000	40 000
Load capacity on reinforced underground	kg	80 000	120 000	120 000
Dimensions L x W x H	mm	3 000 x 1 000 x 15	1 985 x 430 x 20	2 000 x 1 000 x 20
Execution		Performance	Performance	Performance
Weight	kg	42	19	39
ORDER NO.		39 300 100-15 FP	39 198 043-20 FP	39 200 100-20 FP



TYPE		JFP301020	JFP201015PG	JFP201020PG
Load capacity on unpaved and wet underground	kg	20 000	12 000	20 000
Load capacity on unpaved and dry underground	kg	40 000	20 000	40 000
Load capacity on reinforced underground	kg	120 000	80 000	120 000
Dimensions L x W x H	mm	3 000 x 1 000 x 20	2 000 x 1 000 x 15	2 000 x 1 000 x 20
Execution		Performance	Grip	Grip
Weight	kg	58	24	36
ORDER NO.		39 300 100-20 FP	39 200 100-15 FP-PG	39 200 100-20 FP-PG

GROUND PROTECTION MATS

Load capacity up to 20 metric tons

i DESCRIPTION

- Easy installation due to low weight
- Loadable and stable (with solid underground over 20 tons)
- Slip-resistant surface
- Long durability – shatterproof and wear-resistant
- Easy transport in stackable boxes
- Less stressed machines
- Low fuel consumption
- Resistant to liquids
- Protect solid undergrounds
- Characteristics of LuxTek ground protection mats: plastic PE-HD, produced in press procedure, made in Germany, high quality according to DIN and ISO, plasticizers-free, high temperature resistance (-80 °C to +80 °C), weatherproof, heat and frost-resistant, UV-ray resistant
- Easy cleaning



TYPE		JBS20510	JBS201010
Load capacity on unpaved and dry underground	kg	3 000	8 000
Load capacity on reinforced underground	kg	20 000	20 000
Dimensions L x W x H	mm	2 000 x 500 x 10	2 000 x 1 000 x 10
Execution		Flex	Flex
Colour		grey	grey
Weight	kg	9	17,5
ORDER NO.		39 200 050-10 BS	39 200 100-10 BS



TYPE		JBS20512	JBS201012
Load capacity on unpaved and dry underground	kg	5 000	10 000
Load capacity on reinforced underground	kg	20 000	20 000
Dimensions L x W x H	mm	2 000 x 500 x 12	2 000 x 1 000 x 12
Execution		Flex	Flex
Colour		black	grey
Weight	kg	10,5	21
ORDER NO.		39 200 050-12 BS	39 200 100-12 BS

TYPE		JBS20515	JBS201015
Load capacity on unpaved and dry underground	kg	7 000	15 000
Load capacity on reinforced underground	kg	20 000	20 000
Dimensions L x W x H	mm	2 000 x 500 x 15	2 000 x 1 000 x 15
Execution		Flex	Flex
Colour		black	black
Weight	kg	13,5	27
ORDER NO.		39 200 050-15 BS	39 200 100-15 BS

ACCESSORIES FOR GROUND PROTECTION

i DESCRIPTION

Transport boxes:

- Safe transport and easy storage of plastic plates
- Made of galvanized steel
- Lateral discharge of the plates

Connectors:

- Quick and easy installation
- Connection for plastic plates and ground protection mats
- Convenient to construct roads and lanes



TRANSPORT BOXES:

TYPE		JBOX2.1	JBOX3.1
Dimensions L x W x H	mm	2 000 x 1 000	3 000 x 1 000
Execution		Bottom compartement for connectors	Without compartement for connectors
Weight	kg	60	115
ORDER NO.		39 200 100-BOX 2.1	39 300 100-BOX 3.1



CONNECTORS:

TYPE		JFPKLVZ	JESP20
Execution		Connection brackets, galvanized steel	Ground hooks, steel
Weight	kg	0,5	0,75
ORDER NO.		39 000 000-FPKLVZ	39 000 000-ESP20

TYPE		JFPVB2KS	JFPVB4KS
Execution		Double connector Plastic	Fourfold connector, plastic
Weight	kg	0,3	0,5
ORDER NO.		39 000 000-FPVB2KS	39 000 000-FPVB4KS

TYPE		JKRVB2R	JKRVB4R
Execution		Double connector, galvanized steel	Fourfold connector, galvanized steel
Weight	kg	0,25	0,7
ORDER NO.		39 000 000-KRVB2R	39 000 000-KRVB4R

CATALOG OVERVIEW

Visit us on:



Lifting and transport equipment



Tugger trains for intralogistics



**Industrial hydraulics
BVA**



Leveling castors



Lifting bags

Custom solution needed?

We solve uncommon lifting and transport problems by custom solutions - safe, fast and cost effective. Please do not hesitate to contact us!

Consulting, sales and service:

JUNG Hebe- und Transporttechnik GmbH

Biegelwiesenstraße 5-7
F +49 (0)7151 30393-0
info@jung-hebetechnik.de
Biegelwiesenstraße 5-7
D-71334 Waiblingen
jung-hebetechnik.de

Unser Logo und der Name JUNG sind in der EU, in den USA und in China unter folgenden Nummern geschützt:

EU: Logo Nr. 005878897, Name Nr. 005878806

USA: Logo Reg. Nr. 3,713,850, Name Reg. Nr. 3,697,526

China: Logo Nr. 14081450A, Name Nr. 14081449A

Technische Änderungen, die der Verbesserung von Funktion und Qualität dienen, behalten wir uns vor.

Made in Germany 01.2023 · Printed in Germany

Our logo and brand name „JUNG“ are registered as trademarks in the EU, US and China with register numbers:

EU: logo no. 005878897, name no. 005878806,

USA: logo reg. no. 3,713,850, name reg. no. 3,697,526

China: logo no. 14081450A, name no. 14081449A

We reserve the right to make technical modifications which serve to improve function and quality.

Made in Germany 01.2023 · Printed in Germany

JUNG
JUNG-HEBETECHNIK.DE